

**ReadySBC.org**



**Storm Readiness  
Evacuation Information  
Carpinteria**

**Are you ready for emergencies?**

**To sign up for emergency alerts,  
go online to [ReadySBC.org](http://ReadySBC.org)  
or text your ZIP Code  
to 888-777**

*Santa Barbara County is providing this information to help you understand new evacuation definitions, timeline, and areas.*

*Please review this information and be aware in advance of a storm. Check [ReadySBC.org](http://ReadySBC.org) or call 211 for more storm readiness information.*

**ReadySBC.org**

# 72-Hour Storm Evacuation Timeline

## Pre-Evacuation Advisory Issued

Community members should begin planning for potential evacuations. If at any time you feel threatened, take immediate action. Do not wait for a notification.



72 Hours

48 Hours

24 Hours

12 Hours

Storms Arrives

## Mandatory Evacuation Order Issued

Community members in Extreme and High Risk Areas should evacuate now



## Storm Arrives

Storm capable of producing debris flows similar to the 1/9 debris flow event



## Recommended Evacuation Warning

Community members with access or functional needs or large animals should evacuate now



## Mandatory Evacuation Order Becomes Effective

Community members in Extreme and High Risk Areas should have left the area



ReadySBC.org

# Santa Barbara County Storm Evacuation Definitions

## Pre-Evacuation Advisory:

- Santa Barbara County Sheriff's Office is alerting the community of possible risk to life or property.
- Community members should immediately begin preparations to leave and closely monitor the developing situation.
- If at any time you feel threatened, take immediate action. Do not wait for a notification.



## Recommended Evacuation Warning:

- Santa Barbara County Sheriff's Office strongly urges and recommends persons in designated evacuation areas (**Extreme and High Risk Areas**) to relocate to safer locations for their own safety.
- High risk for loss of life and property exists.
- Personal discretion is allowed, but not advised. People with access and functional needs and those with large animals should leave now.
- If at any time you feel threatened, take immediate action. Do not wait for a notification.

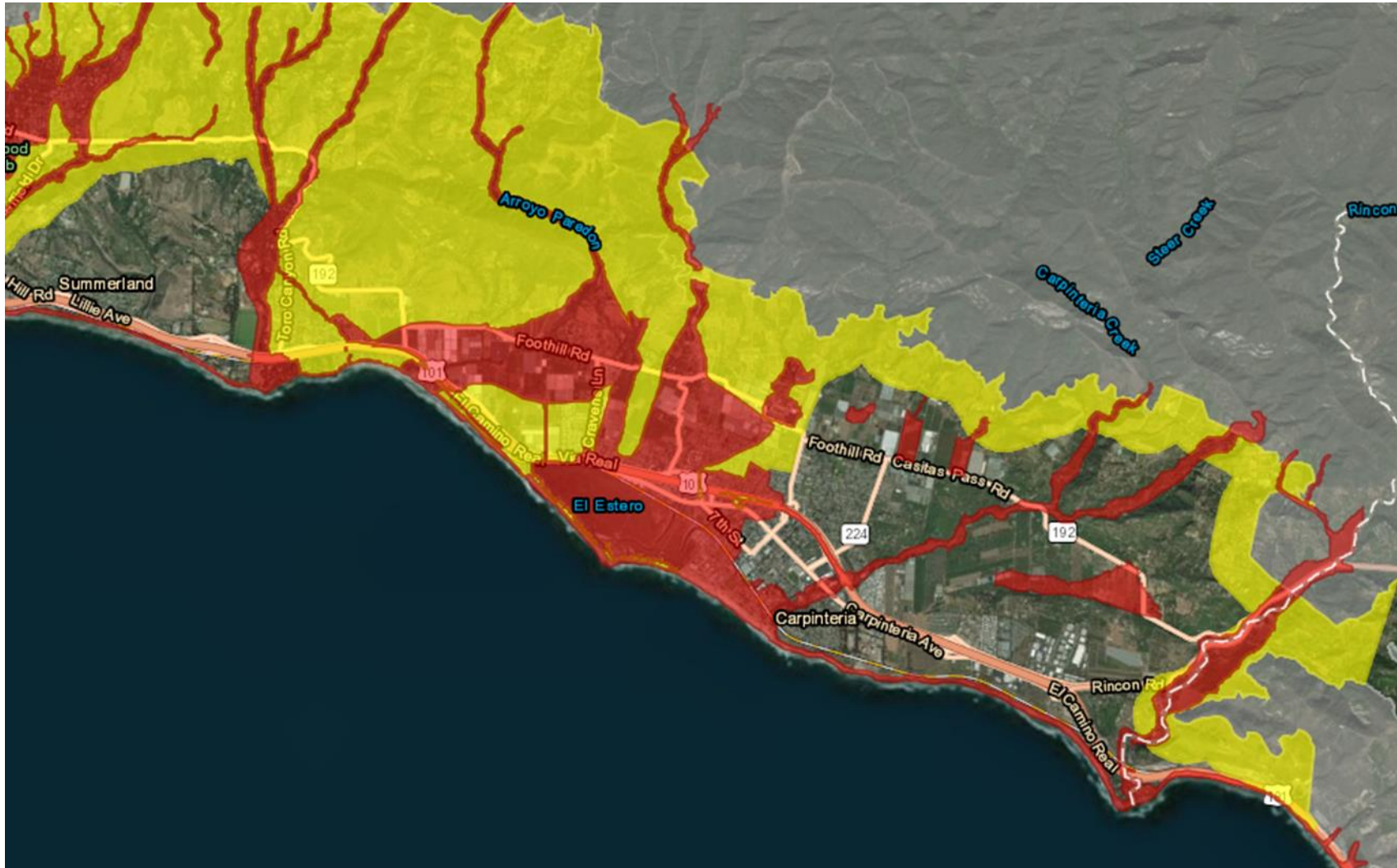
## Mandatory Evacuation Order:

- Santa Barbara County Sheriff's Office orders all persons in designated evacuation areas (**Extreme and High Risk Areas**) to relocate to safer locations for their own safety.
- Extreme risk for loss of life and property exists.
- Personal discretion is not an option.
- A mandatory evacuation order will apply to the public in general.
- Persons who refuse to comply with a mandatory evacuation order will not be forcibly removed from their homes. However, they should not expect rescue or other lifesaving assistance after the onset of the emergency event.

[ReadySBC.org](http://ReadySBC.org)



# Santa Barbara County Debris Flow Risk Area Map – Carpinteria



[ReadySBC.org/StormReadyMap](https://ReadySBC.org/StormReadyMap)

# Map Legend

## **EXTREME RISK** Near a Creek or Channel

These properties are at risk of debris flows from water overtopping the banks, creating high velocity flow (debris, rocks, mud and water) that causes destruction. A creek that may be dry all year can become a raging force of debris, rocks, mud and water as they did on January 9th.

## **HIGH RISK** Between Creeks or Channels

These properties are at risk as creeks and channels may leave their regular courses, impact properties and roads, and isolate residents for multiple days or longer. Roads may become impassable and deadly. Utilities may be disrupted or destroyed.

## **HIGH RISK** The Burn Area

These properties are at risk from mudslides and rocks from the slopes above the property or by the debris, mud, rocks and water that is carried down the watercourses from high up on the mountain.

**When you are ordered to evacuate, you need to go**

- **If a storm occurs with limited or no warning, you also need to be prepared**

- **During a storm, roads may be blocked by water or rocks.**

- **You need to know the threats that surround you**



# Local Resources and Information

## SB County Sheriff's Office

Emergency: 911

Non-Emergency 24/7 Dispatch: (805) 683-2724

## California Highway Patrol (CHP)

Santa Barbara office: (805) 967-1234

## SB County Animal Services

Santa Barbara: 5473 Overpass Road, Goleta, CA  
93117 (805) 681-5285

## City of Carpinteria Public Works

(805) 684-5405

## Carpinteria-Summerland Fire Department

General number: (805) 684-4591

## SB County Planning and Development

Reception: (805) 568-2000

Building & Safety Counter: (805) 568-3030

Planning/Zoning Counter: (805) 568-2090

## SB County Public Works

(805) 568-3000

## Interactive Debris Flow Risk Areas Map

[ReadySBC.org/StormReadyMap](https://ReadySBC.org/StormReadyMap)

## 211 – Information on Local Resources

[211SantaBarbaraCounty.org](https://211SantaBarbaraCounty.org)

Outside 805 Area Code: (800) 400-1572

## Stay Connected on Social Media



@CountyofSB

ReadySBC.org

#805Strong