

October 2017

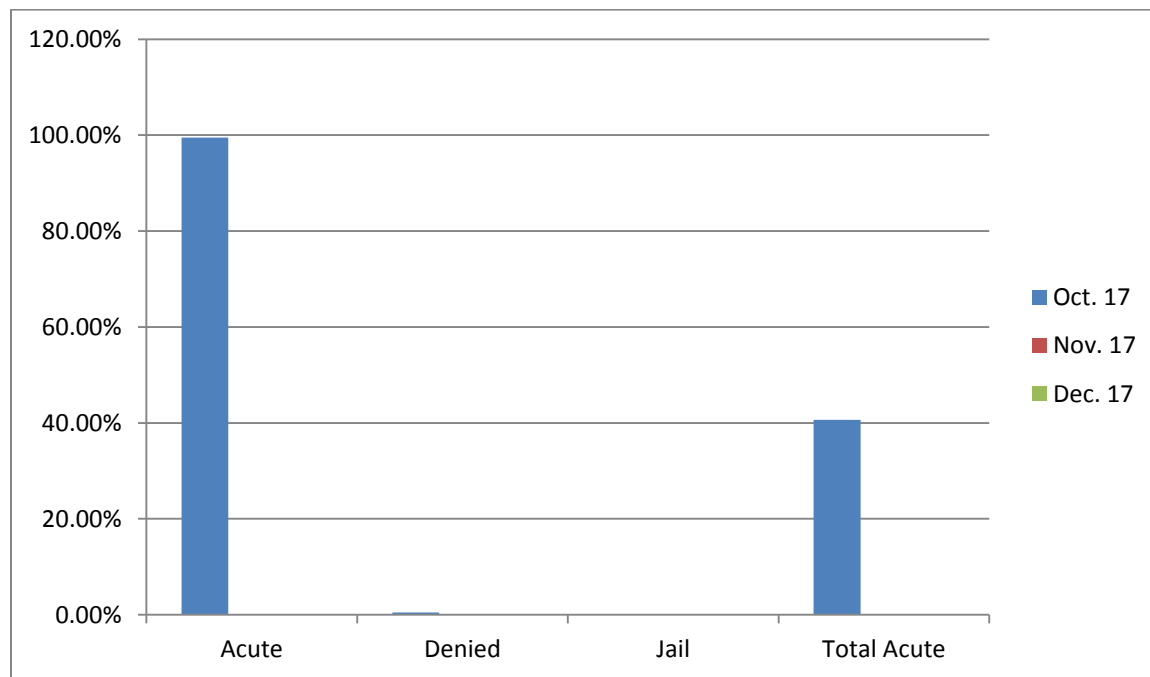
Total Bed Days: 541

Total Admission: 52

109% Occupancy

Acute Days Summary	Days	Percent
Acute Days	219	99.5%
Denied Acute Days	1	.45%
Jail	0	0%
Total Acute Days	220	
% of Acute Days of Total Bed Days		40.67%

Acute Days Summary



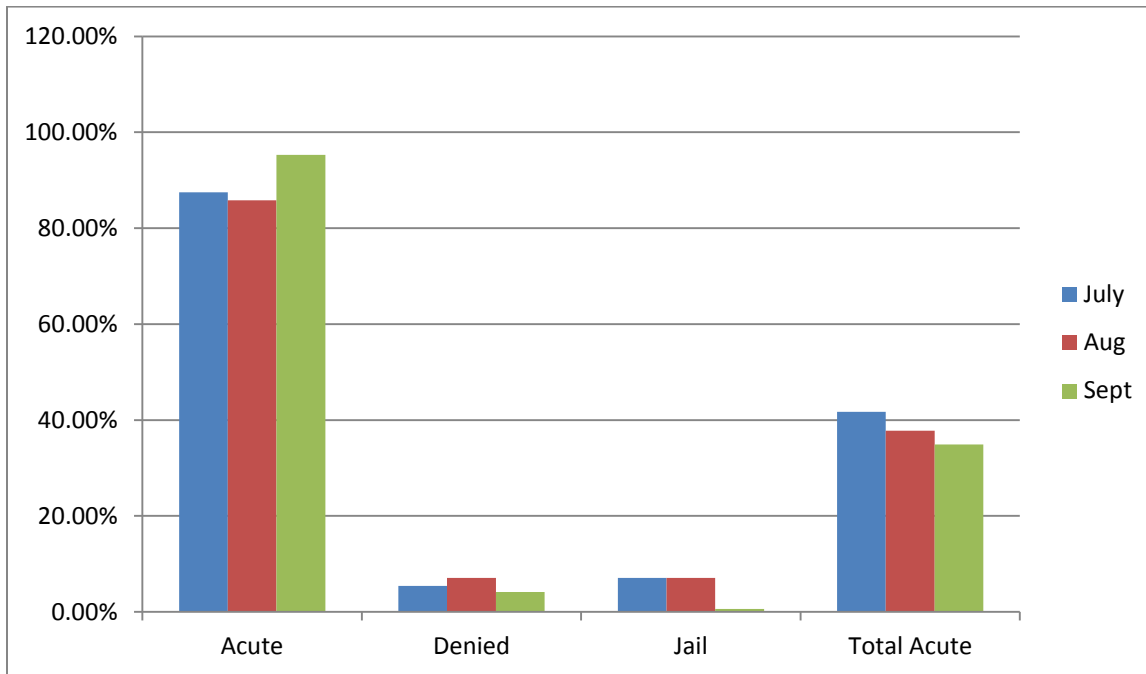
October 2017

Total Bed Days: 541

Total Admission: 52

109% Occupancy

Acute Days Summary: Last Two Quarters:

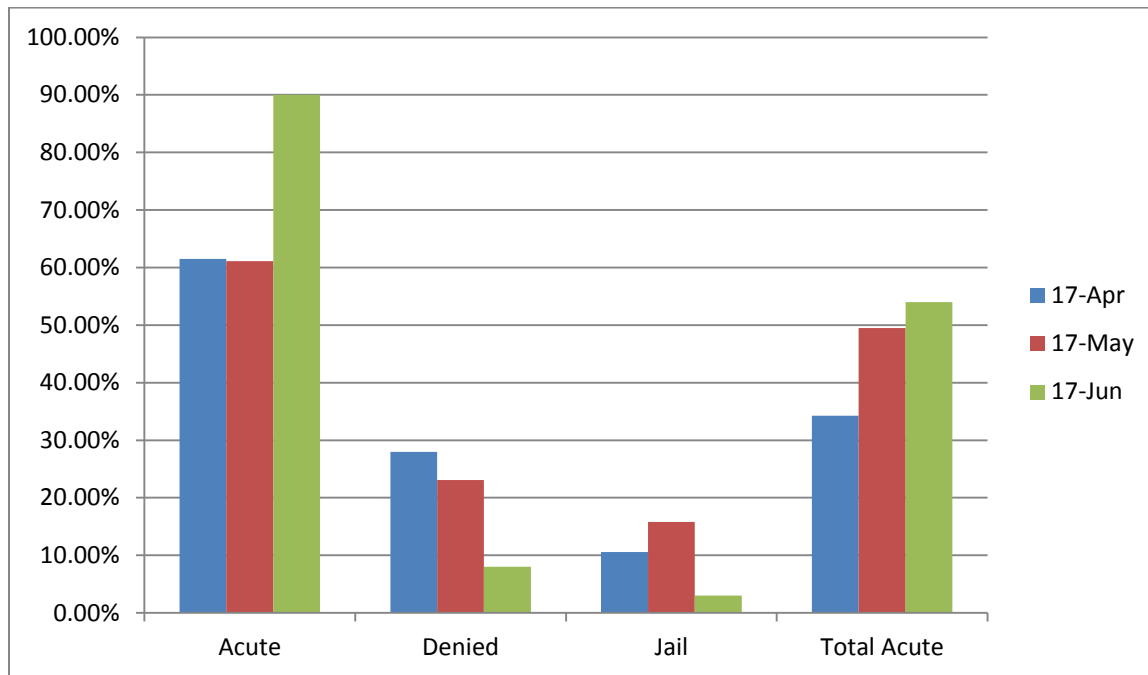


October 2017

Total Bed Days: 541

Total Admission: 52

109% Occupancy



October 2017

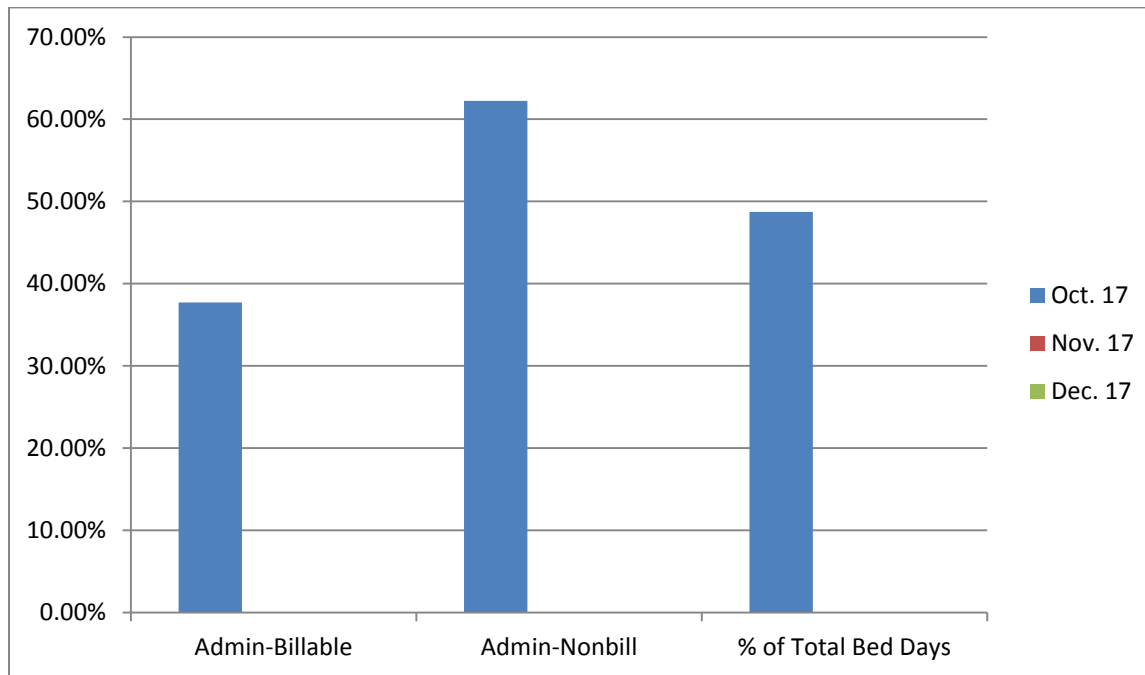
Total Bed Days: 541

Total Admission: 52

109% Occupancy

Admin Days Summary	Days	Percent
Admin –Billable	88	37.77%
Admin- Non Bill	145	62.23%
Total Admin Days	233	
% of Admin Days of Total Bed Days		48.74%

Admin Days Summary



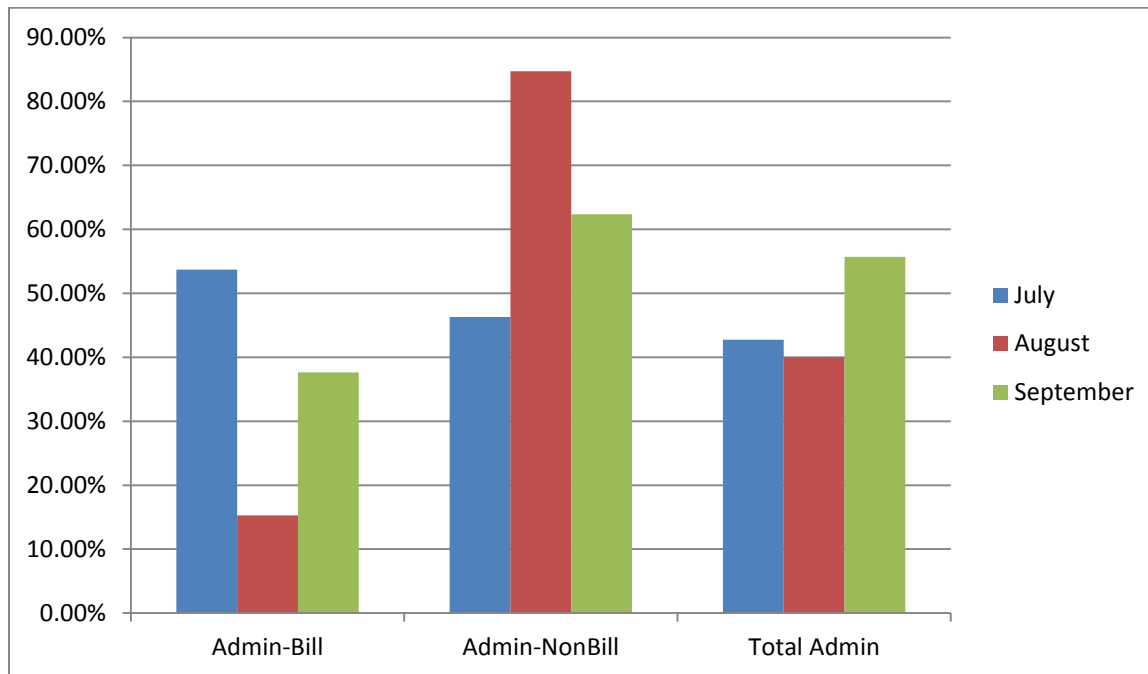
October 2017

Total Bed Days: 541

Total Admission: 52

109% Occupancy

Last two quarters:

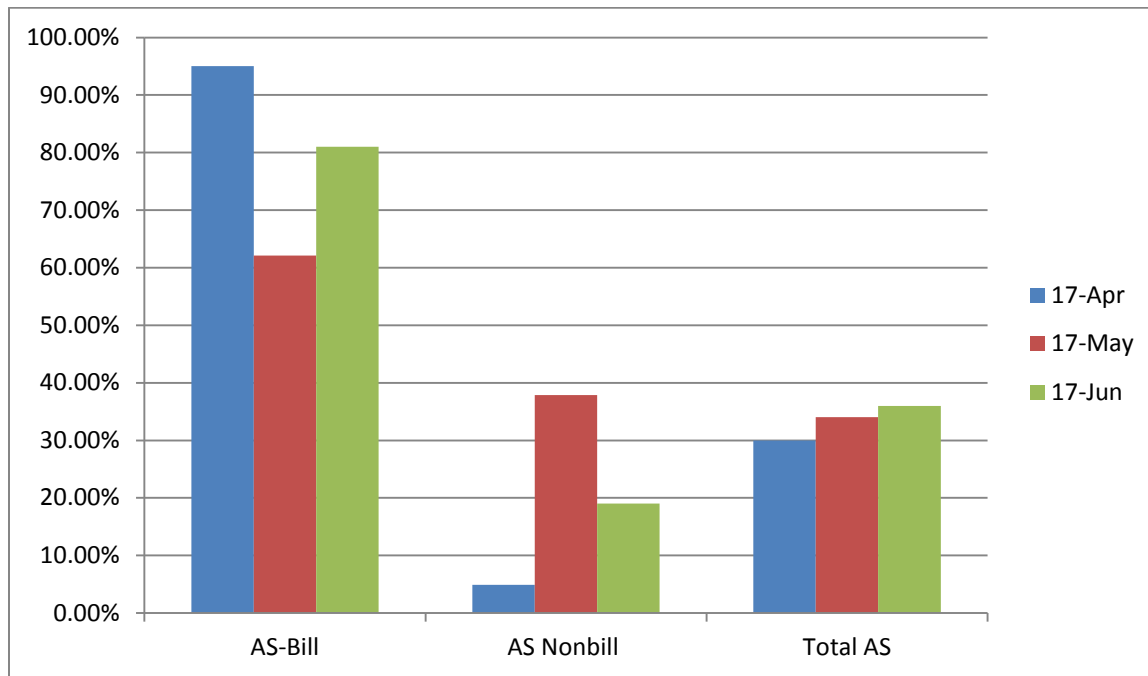


October 2017

Total Bed Days: 541

Total Admission: 52

109% Occupancy



October 2017

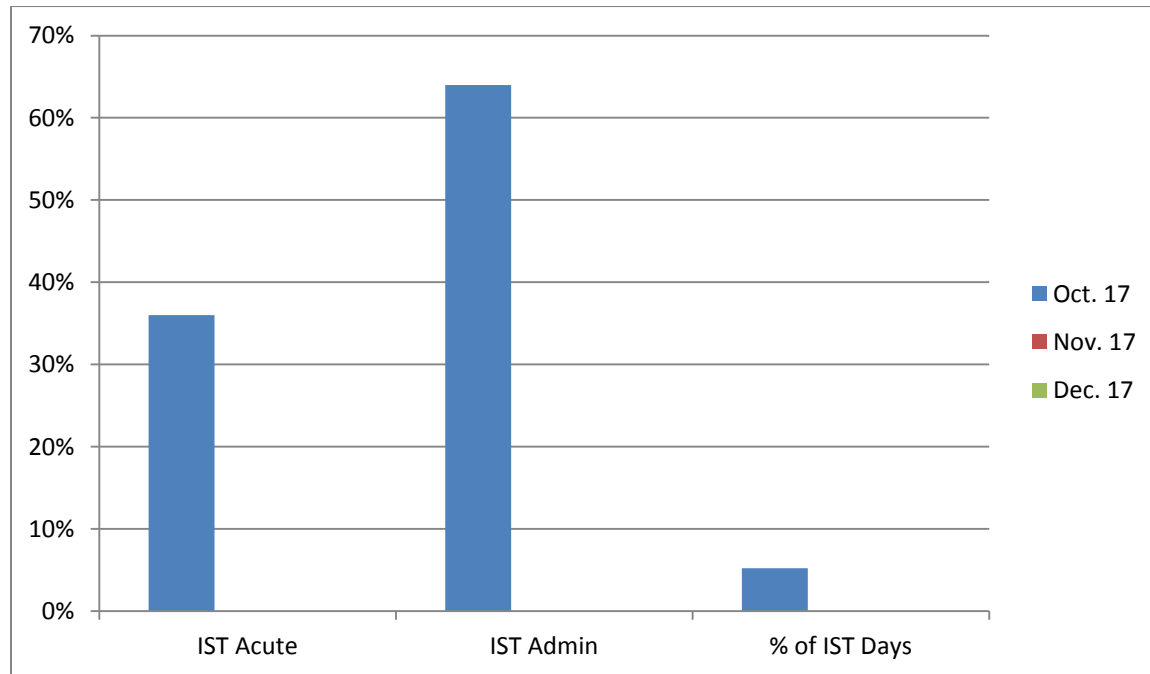
Total Bed Days: 541

Total Admission: 52

109% Occupancy

IST DAYS SUMMARY	Days	Percent
IST ACUTE DAYS	9	36%
IST ADMIN DAYS	16	64%
IST Denied Days	0	0.00%
Total IST DAYS	25	
% of IST Days of Total Bed Days		5.23%

IST DAYS



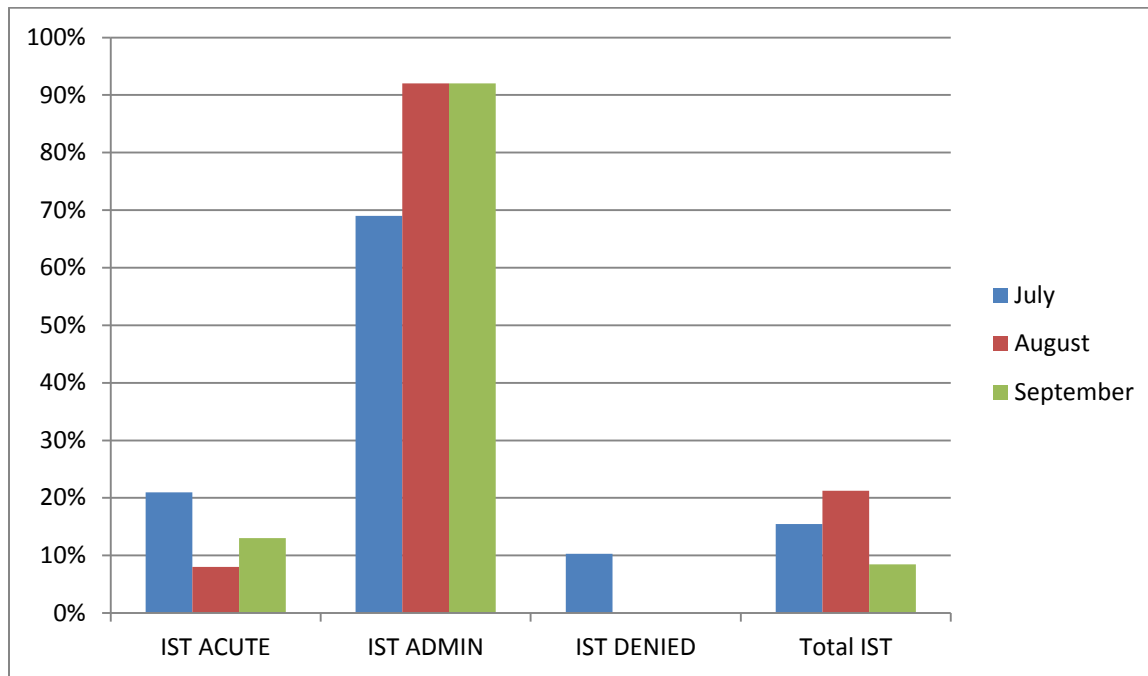
October 2017

Total Bed Days: 541

Total Admission: 52

109% Occupancy

IST Summary Last two quarters:

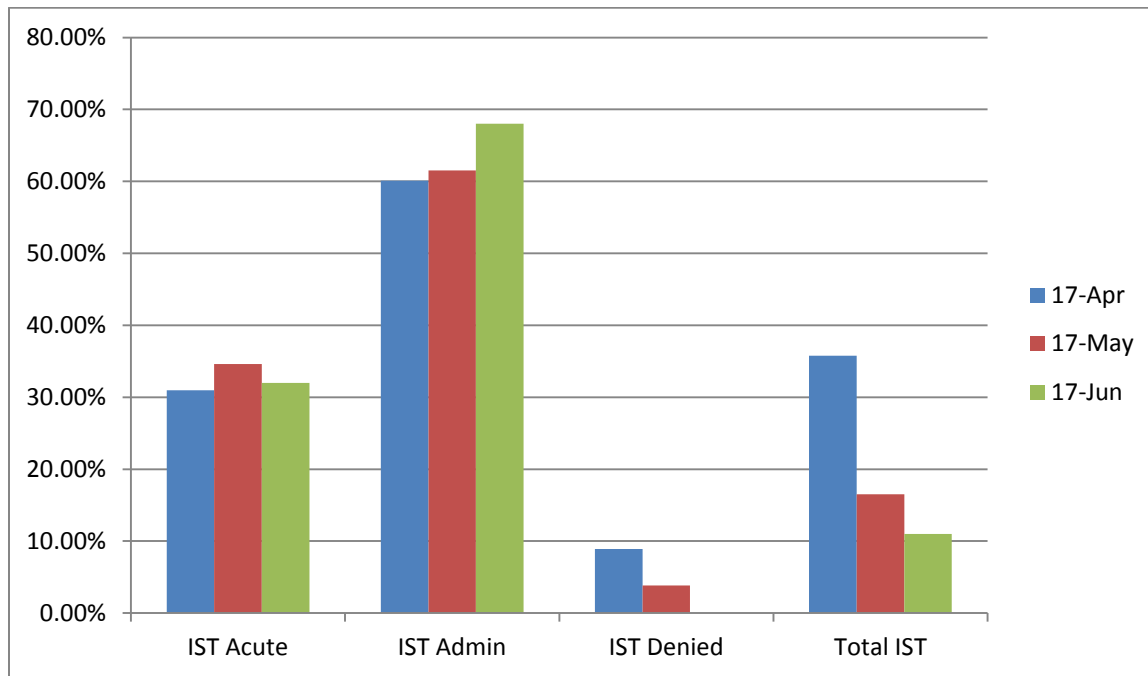


October 2017

Total Bed Days: 541

Total Admission: 52

109% Occupancy



October 2017

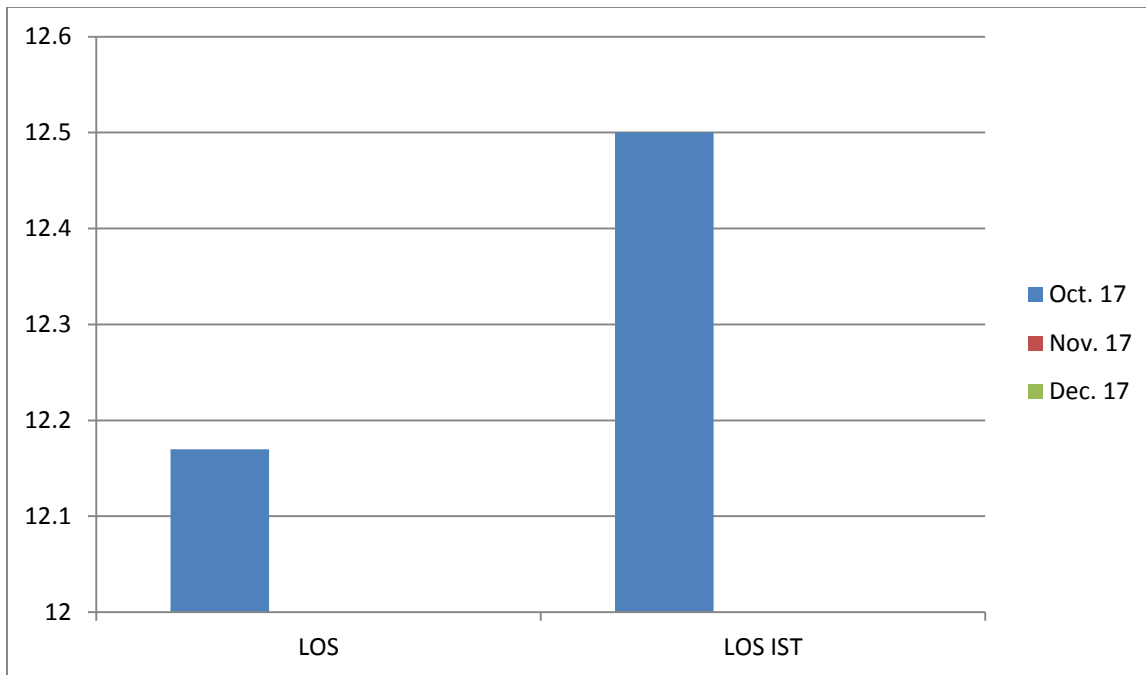
Total Bed Days: 541

Total Admission: 52

109% Occupancy

LOS Summary	
LOS Discharged Clients Since Admission	12.17
LOS IST Client	12.50

LOS Summary

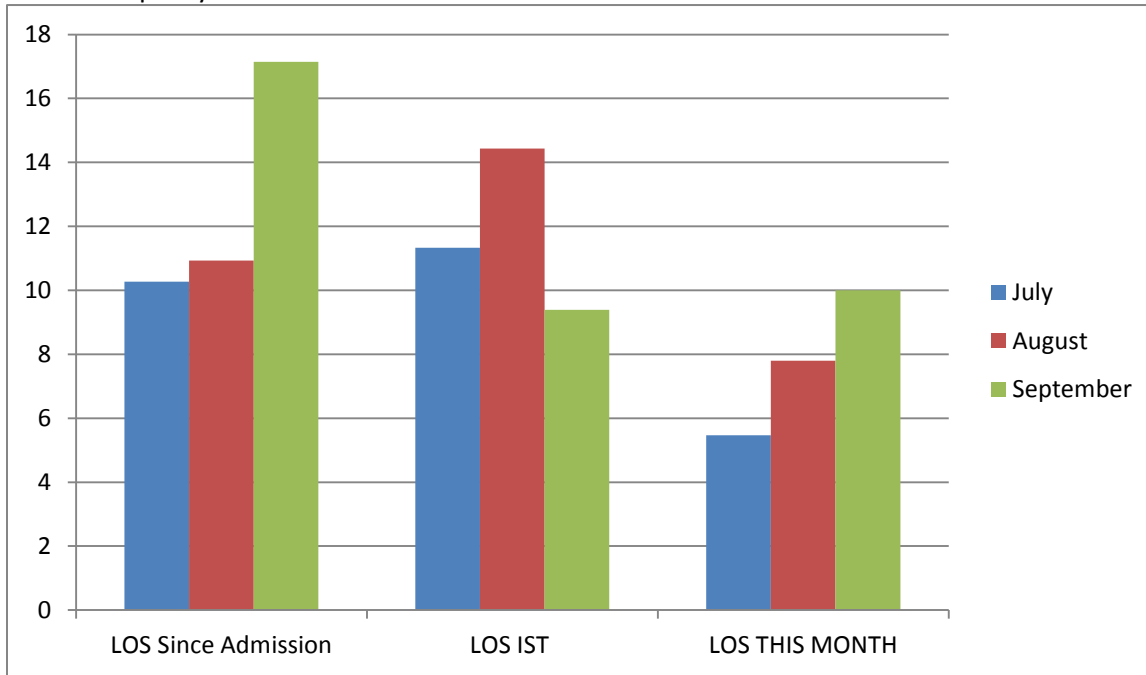


October 2017

Total Bed Days: 541

Total Admission: 52

109% Occupancy



LOS Summary Last Quarter

October 2017

Total Bed Days: 541

Total Admission: 52

109% Occupancy

