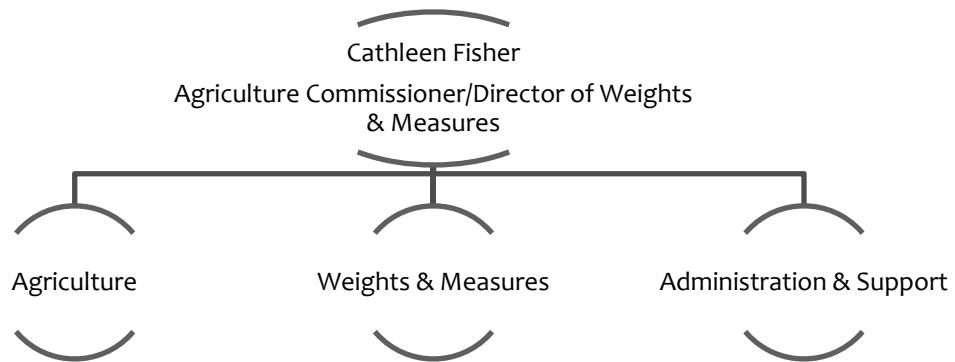


# Agricultural Commissioner Weights & Measures



## RECOMMENDED BUDGET & STAFFING SUMMARY & BUDGET PROGRAMS CHART

<b>Operating</b>	<b>\$5,981,700</b>
<b>Capital</b>	<b>\$ 65,000</b>
<b>FTEs</b>	<b>37.0</b>



# Agricultural Commissioner Weights & Measures

## Department

---

### *MISSION STATEMENT*

---

The mission of the Agricultural Commissioner's Office is to protect agriculture, natural resources, and the quality of life in Santa Barbara County.

### *DEPARTMENT DESCRIPTION*

---

The Agricultural Commissioner's Office enforces laws and regulations in our agricultural and weights & measures programs. The Pesticide Use Enforcement and Pest Prevention are the main components of the Agriculture budget program. These programs are designed to ensure the safe and legal use of pesticides and to prevent the introduction of harmful exotic pests. The Department also issues over 6,000 Phytosanitary certificates a year that enable local agricultural products to enter the global marketplace.

The Weights & Measures budget program protects businesses and consumers by ensuring fairness in the marketplace. Inspectors check the accuracy of over 6,500 commercial devices in the County each year and check over 750 stores with point-of-sale (scanner) systems for pricing accuracy.

The Department also provides education and outreach to farmers, farm workers, businesses and the public on regulatory compliance, integrated pest management, reduced risk pesticide use, and pests of concern.

### *HIGHLIGHTS OF 2018-19 OBJECTIVES*

---

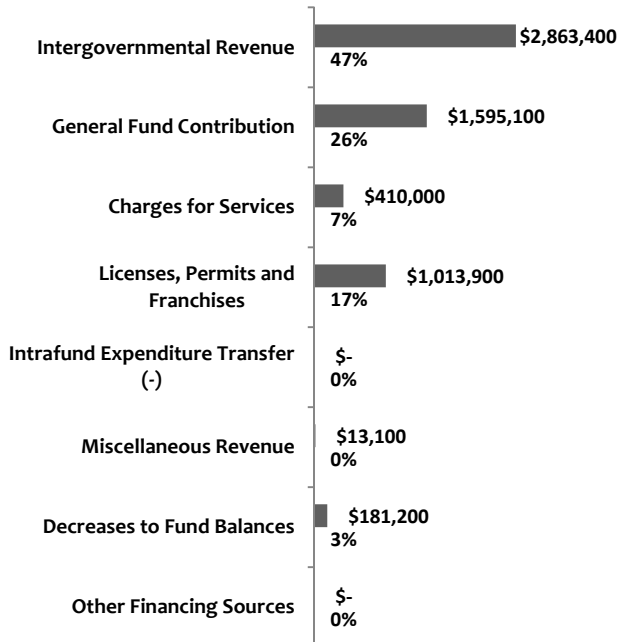
- Assure staff is prepared to become certified through the U.S. Department of Agriculture and provide phytosanitary certification services to the local agricultural industry in order to export their products to other countries.
- Create a combined Agriculture/Weights & Measures Inspector position to increase flexibility, efficiency and maximize resources.
- Work with our state partners on developing testing procedures for alternative energy fuel sources, such as electrical vehicle charging stations and transportation measuring system companies.
- Develop operational guidelines to the Departments Continuity of Operations Plan (COOP) for natural disasters.
- Support staff to become qualified and prepare for future leadership opportunities.

# Agricultural Commissioner Weights & Measures

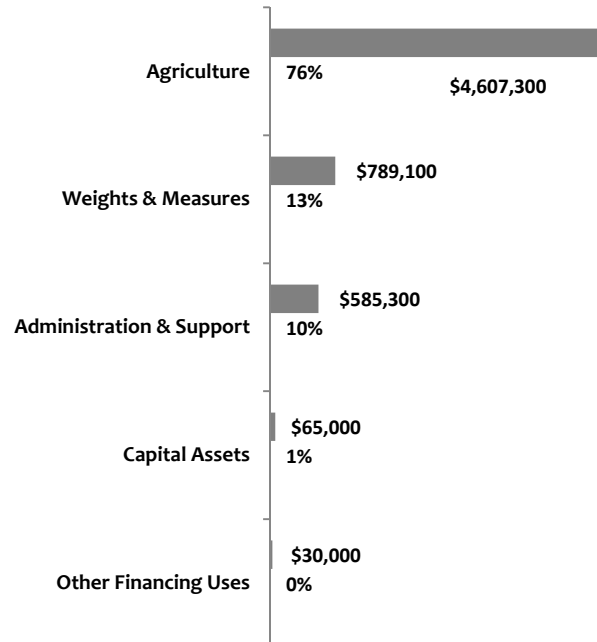
Department

## RECOMMENDED SOURCES & USES OF FUNDS

### Source of Funds - \$6,076,700

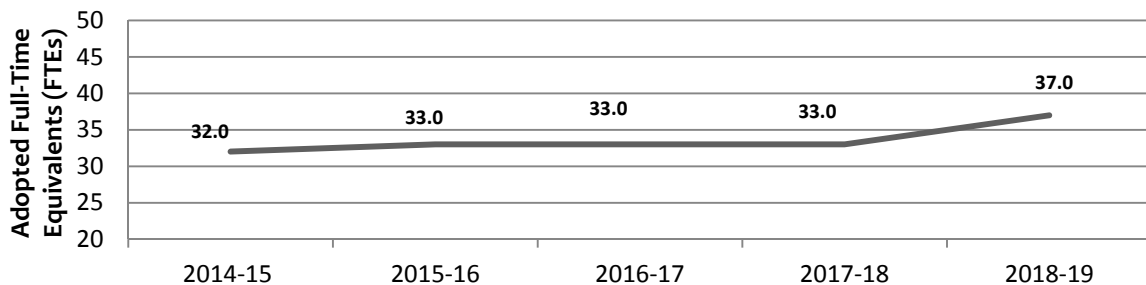


### Use of Funds - \$6,076,700



## STAFFING TREND

FTE counts include regular staff only, and do not include extra help and contractors-on-payroll.



# Agricultural Commissioner Weights & Measures

## Department

### BUDGET OVERVIEW

Staffing Detail By Budget Program	2016-17 Actual	2017-18 Adopted	2017-18 Estimated Actual	2018-19 Recommended	Change From FY17-18 Ado to FY18-19 Rec
Administration & Support	1.56	1.62	1.62	1.77	0.14
Agriculture	24.67	26.23	26.23	30.00	3.78
Weights & Measures	5.29	5.15	5.15	5.23	0.08
<b>Total</b>	<b>31.52</b>	<b>33.00</b>	<b>33.00</b>	<b>37.00</b>	<b>4.00</b>
<b>Budget By Budget Program</b>					
Administration & Support	\$ 416,544	\$ 434,627	\$ 469,400	\$ 585,300	\$ 150,673
Agriculture	3,572,117	4,002,447	3,876,100	4,607,300	604,853
Weights & Measures	701,629	771,917	771,900	789,100	17,183
<b>Total</b>	<b>\$ 4,690,290</b>	<b>\$ 5,208,991</b>	<b>\$ 5,117,400</b>	<b>\$ 5,981,700</b>	<b>\$ 772,709</b>
<b>Budget By Categories of Expenditures</b>					
Salaries and Employee Benefits	\$ 3,645,060	\$ 4,257,358	\$ 4,180,000	\$ 4,940,900	\$ 683,542
Services and Supplies	651,410	518,871	518,800	585,800	66,929
Other Charges	393,821	432,762	418,600	455,000	22,238
<b>Total Operating Expenditures</b>	<b>4,690,290</b>	<b>5,208,991</b>	<b>5,117,400</b>	<b>5,981,700</b>	<b>772,709</b>
Capital Assets	89,648	-	-	65,000	65,000
Other Financing Uses	-	25,000	25,000	30,000	5,000
Fund Balance Impact (+)	1,389	-	-	-	-
<b>Total</b>	<b>\$ 4,781,327</b>	<b>\$ 5,233,991</b>	<b>\$ 5,142,400</b>	<b>\$ 6,076,700</b>	<b>\$ 842,709</b>
<b>Budget By Categories of Revenues</b>					
Licenses, Permits and Franchises	\$ 450,784	\$ 466,000	\$ 466,000	\$ 1,013,900	\$ 547,900
Intergovernmental Revenue	2,095,220	2,708,791	2,672,300	2,863,400	154,609
Charges for Services	442,363	417,000	372,700	410,000	(7,000)
Miscellaneous Revenue	34,513	13,100	13,100	13,100	-
<b>Total Operating Revenues</b>	<b>3,022,881</b>	<b>3,604,891</b>	<b>3,524,100</b>	<b>4,300,400</b>	<b>695,509</b>
Other Financing Sources	10,445	1,750	-	-	(1,750)
Intrafund Expenditure Transfers (-)	46,500	23,250	23,200	-	(23,250)
Decreases to Fund Balances	67,802	9,000	-	181,200	172,200
General Fund Contribution	1,633,700	1,595,100	1,595,100	1,595,100	-
<b>Total</b>	<b>\$ 4,781,327</b>	<b>\$ 5,233,991</b>	<b>\$ 5,142,400</b>	<b>\$ 6,076,700</b>	<b>\$ 842,709</b>

FTE counts include regular staff only, and do not include extra help and contractors-on-payroll.

# Agricultural Commissioner Weights & Measures

## Department

### *CHANGES & OPERATIONAL IMPACT: 2017-18 ADOPTED TO 2018-19 RECOMMENDED*

#### **Staffing**

- Net Increase of 4.0 FTE:
  - 4.0 FTE increase due to Cannabis Licensing & Enforcement Programs
  - Current staffing level is at 37.0 FTEs.
  - The department is fully staffed.

#### **Expenditures**

- Net operating expenditures increase of \$772,700 is primarily due to:
  - +\$683,500 increase in Salaries and Employee Benefits reflects an increase in regular salaries, retirement, Social Security, medical insurance costs and unemployment insurance costs.
  - +\$67,000 increase in Services and Supplies due to:
    - -\$20,000 decrease in Special Projects.
    - +\$10,000 increase in communications.
    - +\$30,000 increase in contractual services.
    - +\$26,000 increase in special departmental expense.
    - +\$9,900 increase in transportation and travel.
    - +\$10,000 increase in training.
    - +\$1,100 increase in other services and supplies.
  - +\$22,200 increase in Other Charges for Utilities and Other Services.
- Net Non-operating expenditures increase of \$70,000 is primarily due to:
  - +\$65,000 Increase in Capital Assets for one-time purchase of Weights & Measures equipment.
  - +\$5,000 increase in Other Financing Uses for purchase of vehicles.

These changes result in recommended operating expenditures of \$5,981,700, non-operating expenditures of \$95,000 for total expenditures of \$6,076,700.

#### **Revenues**

- Net operating revenue increase of \$695,500 is primarily due to:
  - +\$154,600 increase in Intergovernmental Revenue for our agricultural programs.
  - -\$7,000 decrease in Charges for Services due to the completion of weed abatement grants.
  - +\$547,900 increase in Licenses, Permits and Franchises due to new businesses and cannabis permits being added to the Weights and Measures database.
- Net non-operating revenue increase of \$147,200 is primarily due to:
  - +\$172,200 increase in use of Fund Balances.

These changes result in recommended operating revenues of \$4,300,400, non-operating revenues of \$1,776,300 and total revenues of \$6,076,700. Non-operating revenues primarily include General Fund Contribution and a decrease from restricted fund balance.

#### *RELATED LINKS*

For more information on the Agricultural Commissioner, refer to the website at <http://www.agcommissioner.com>.

# Agricultural Commissioner Weights & Measures

## Department

### PERFORMANCE MEASURES

Description	FY 2015-16 Actual	FY 2016-17 Actual	FY 2017-18 Estimated Actual	FY 2018-19 Recommend
<b>Administration &amp; Support</b>				
Percent of departmental Employee Performance Reviews (EPRs) completed by the due date	100% 45/45	99% 32/33	100% 33/33	100% 33/33
<b>Agriculture</b>				
Percent of 28 Certified Farmers' Market inspections conducted	N/A	100% 28/28	100% 28/28	100% 28/28
Percent of 400 pesticide monitoring inspections conducted	104% 414/400	100% 400/400	106% 425/400	100% 400/400
Percent of 100 education/outreach sessions conducted	N/A	100% 100/100	100% 100/100	100% 100/100
<b>Weights &amp; Measures</b>				
Percent of 6,500 commercial weighing and measuring devices inspected for compliance	100% 6,500/6,500	100% 6,500/6,500	100% 6,500/6,500	100% 6,500/6,500
Percent of 750 business locations with point-of-sale (scanner) pricing systems inspected	100% 750/750	100% 750/750	100% 750/750	100% 750/750

# Agricultural Commissioner Weights & Measures



# Agricultural Commissioner Weights & Measures

## Program

### ADMINISTRATION & SUPPORT

The Agricultural Commissioner/Weights and Measures Administration & Support are the front line staff of the department. A wide variety of essential functions are performed in support of the department's diverse programs and responsibilities.

#### Staffing

Staffing Detail By Budget Program	2016-17 Actual	2017-18 Adopted	2017-18 Estimated Actual	2018-19 Recommended	Change From FY17-18 Ado to FY18-19 Rec
AG COMM/SEALER WGTS-MEAS	0.84	0.82	0.82	0.89	0.06
ASST DIRECTOR	0.27	0.36	0.36	0.32	(0.04)
EDP SYS & PROG ANLST	0.14	0.17	0.17	0.12	(0.05)
AGRI COMMISSIONER-DEPT	0.05	0.06	0.06	0.26	0.20
DEPUTY DIRECTOR	0.01	-	-	0.03	0.03
TEAM/PROJECT LDR-GEN	0.13	0.12	0.12	-	(0.12)
ADMN OFFICE PRO	0.02	0.02	0.02	0.04	0.02
AGRICULTURAL INTEGRATED PEST MANAGEMI	0.02	0.01	0.01	0.01	0.01
AGRI BIOLOGIST SUPV	0.02	0.01	0.01	-	(0.01)
WGTS-MEASURES INSP	0.02	0.01	0.01	0.03	0.02
AGRI BIOLOGIST	0.04	0.03	0.03	0.05	0.02
ADMN OFFICE PRO SR	-	-	-	0.01	0.01
Total	1.56	1.62	1.62	1.77	0.14

FTE counts include regular staff only, and do not include extra help and contractors-on-payroll.

#### Revenue & Expenditures

Budget By Categories of Expenditures	2016-17 Actual	2017-18 Adopted	2017-18 Estimated Actual	2018-19 Recommended	Change From FY17-18 Ado to FY18-19 Rec
Salaries and Employee Benefits	\$ 354,162	\$ 389,733	\$ 346,100	\$ 441,100	\$ 51,367
Services and Supplies	29,873	19,594	19,600	8,500	(11,094)
Other Charges	32,509	25,300	103,700	135,700	110,400
Total Operating Expenditures	416,544	434,627	469,400	585,300	150,673
Total Expenditures	\$ 416,544	\$ 434,627	\$ 469,400	\$ 585,300	\$ 150,673
<b>Budget By Categories of Revenues</b>					
Licenses, Permits and Franchises	-	-	-	164,000	164,000
Intergovernmental Revenue	49,153	66,946	103,500	341,500	274,554
Total Operating Revenues	49,153	66,946	103,500	505,500	438,554
Other Financing Sources	3,500	1,750	-	-	(1,750)
Intrafund Expenditure Transfers (-)	46,500	23,250	23,200	-	(23,250)
General Fund Contribution	264,231	342,681	342,700	79,800	(262,881)
Total Revenues	\$ 363,384	\$ 434,627	\$ 469,400	\$ 585,300	\$ 150,673



# Agricultural Commissioner Weights & Measures

## Program

### *ADMINISTRATION & SUPPORT (CONT'D)*

#### **2017-18 Anticipated Accomplishments**

- Administrative staff ensure 98% of the agricultural and pest control industry make the transition to enter their pesticide use reports into the CalAg Permit system directly. This has led to efficiency in cost savings.
- Department Strategic Plan Implemented.
- Administrative staff work with the agricultural industry to ensure accurate data entry into the Phytosanitary Certificate Issuance & Tracking System.
- Safety Team continues to review updates to the Department's Illness Injury Policy and Procedures (IIPP), develop safety policies, investigate employee accidents and develop a database to track department safety.
- Supported the Office of Emergency Management (OEM) during the Alamo and Thomas fires and Montecito debris flow and recovery. Assisted the (OEM) with organizing a Local Assistance Meeting for the public after the Thomas fire. Collaborated with the (OEM) to minimize impacts to the agricultural community.
- Facilitated a Local Assistance Meeting for the agricultural community impacted by the Thomas fire and supported state and federal agencies with recovery efforts. Distributed 4,800 N95 masks to the agricultural community during the Thomas fire.
- Leadership staff completed all required Human Resource training courses.

#### **2018-19 Objectives**

- Develop operational guidelines to the Departments (COOP) for natural disasters.
- Work with the weights and measures database vendor to improve data reporting, increasing efficiency in the permitting process.
- Provide support to the Deputy Sealer and the Deputy Commissioner's for program/service needs of businesses and the agricultural industry. Enter all commercial device permits into the weights and measures database.
- Enable industry to process their federal phytosanitary certificate forms at their office locations. Transition at least 2 growers to assume Authorized Entity (AE) roles per California Department Food and Agriculture (CDFA) requirements.
- Work with the Human Resources Department to create a combined Agriculture/Weights & Measures Inspector position to increase flexibility, efficiency and maximize resources.
- Work with the Human Resources Department to implement a licensing incentive program for succession planning and staff retention.
- Support staff with successfully obtaining all state licenses and to prepare for future leadership opportunities.
- Support leadership staff with enrolling in Human Resources management/executive training classes.
- Continue to support the Emergency Operations Center (EOC) during natural disasters and recovery and support federal agencies for recovery efforts involving the agricultural community.

# Agricultural Commissioner Weights & Measures

## Program

### AGRICULTURE

This program is divided into two main components, Pesticide Use Enforcement and Pest Prevention in addition to organic, direct marketing and statistics programs. These mandated programs are designed to ensure the safe and legal use of pesticides in the agricultural and structural settings and to prevent the introduction of harmful exotic pests into this county through inspection of incoming agricultural products.

### Staffing

Staffing Detail By Budget Program	2016-17 Actual	2017-18 Adopted	2017-18 Estimated Actual	2018-19 Recommended	Change From FY17-18 Ado to FY18-19 Rec
AG COMM/SEALER WGTS-MEAS	0.10	0.10	0.10	0.08	(0.02)
ASST DIRECTOR	0.69	0.60	0.60	0.62	0.01
EDP SYS & PROG ANLST	0.80	0.77	0.77	0.82	0.06
AGRI COMMISSIONER-DEPT	1.95	1.94	1.94	2.74	0.80
DEPUTY DIRECTOR	0.15	0.14	0.14	0.11	(0.03)
TEAM/PROJECT LDR-GEN	0.87	0.88	0.88	-	(0.88)
ADMN OFFICE PRO	2.41	2.72	2.72	2.61	(0.12)
AGRI BIOLOGIST SUPV	1.91	1.99	1.99	3.00	1.01
AGRICULTURAL INTEGRATED PEST MANAGEMI	0.59	0.99	0.99	0.99	(0.01)
WGTS-MEASURES INSP	0.67	0.20	0.20	0.17	(0.03)
AGRI BIOLOGIST	13.66	14.97	14.97	17.94	2.97
ADMN OFFICE PRO SR	0.88	0.93	0.93	0.93	-
<b>Total</b>	<b>24.67</b>	<b>26.23</b>	<b>26.23</b>	<b>30.00</b>	<b>3.78</b>

FTE counts include regular staff only, and do not include extra help and contractors-on-payroll.

### Revenue & Expenditures

Budget By Categories of Expenditures	2016-17 Actual	2017-18 Adopted	2017-18 Estimated Actual	2018-19 Recommended	Change From FY17-18 Ado to FY18-19 Rec
Salaries and Employee Benefits	\$ 2,719,142	\$ 3,228,749	\$ 3,175,700	\$ 3,833,000	\$ 604,251
Services and Supplies	585,014	451,903	451,900	522,400	70,497
Other Charges	267,962	321,795	248,500	251,900	(69,895)
<b>Total Operating Expenditures</b>	<b>3,572,117</b>	<b>4,002,447</b>	<b>3,876,100</b>	<b>4,607,300</b>	<b>604,853</b>
Other Financing Uses	-	25,000	25,000	15,000	(10,000)
<b>Total Expenditures</b>	<b>\$ 3,572,117</b>	<b>\$ 4,027,447</b>	<b>\$ 3,901,100</b>	<b>\$ 4,622,300</b>	<b>\$ 594,853</b>
<b>Budget By Categories of Revenues</b>					
Licenses, Permits and Franchises	6,893	6,000	6,000	384,200	378,200
Intergovernmental Revenue	2,046,067	2,641,845	2,568,800	2,521,900	(119,945)
Charges for Services	433,083	408,000	363,700	401,000	(7,000)
Miscellaneous Revenue	23,143	2,700	2,700	2,700	-
<b>Total Operating Revenues</b>	<b>2,509,186</b>	<b>3,058,545</b>	<b>2,941,200</b>	<b>3,309,800</b>	<b>251,255</b>
Other Financing Sources	3,705	-	-	-	-
Decreases to Fund Balances	-	9,000	-	116,200	107,200
General Fund Contribution	1,089,810	959,902	959,900	1,196,300	236,398
<b>Total Revenues</b>	<b>\$ 3,602,701</b>	<b>\$ 4,027,447</b>	<b>\$ 3,901,100</b>	<b>\$ 4,622,300</b>	<b>\$ 594,853</b>

# Agricultural Commissioner Weights & Measures

## Program

### *AGRICULTURE (CONT'D)*

#### **2017-18 Anticipated Accomplishments**

- Hosted an Environmental Justice Pesticide workshop to inform and educate the community of pesticide use enforcement, reporting, and worker safety. The workshop was designed to provide attendees with a better understanding of the California Department of Pesticide Regulation Enforcement (DPR) program and the services it provides to county agricultural commissioners.
- Due to the Thomas Fire, hosted a Grower Recovery Assistance Workshop with multiple agencies and created a dedicated departmental web page to facilitate assistance for the agricultural industry.
- Staff continued to provide valuable services for agriculture businesses south of the Highway 101 closure.
- Staff worked closely with the (EOC) on recent disaster response including Alamo, Whittier, Thomas fires and Montecito mudslide. Department improved communication between emergency responders and the agricultural community in the affected areas and assimilated disaster statistics.
- Prepared an agricultural disaster response plan that includes information for our department and to assist other County Agricultural Commissioner's with emergency disaster response.
- Staff compiled information and data on the progress of agriculture toward the goal of promoting science-based and economically sound strategies to lower greenhouse gas emissions from agriculture production as reported in the 2017 Energy and Climate Action Plan Report.
- The Detection Dog Team has integrated into all County parcel facilities and has been certified and trained to work in the United States Postal facilities. The team also works in neighboring counties which creates an integrated and regional approach to preventing invasive pests from entering Santa Barbara County and State.
- Conducted education and outreach to citrus growers regarding Asian Citrus Psyllid (ACP) and Huanglongbing (HLB), Citrus Greening Disease, program requirements.
- Assisting (CDFA) in monitoring the effectiveness of two biological control agents which have been released in Santa Barbara County to combat (ACP).
- Participated in the local workgroup on Invasive Shot Hole Borers (SHB) and statewide (SHB) taskforce in addition to deploying and maintaining insect traps at local campgrounds for the Gold-Spotted Oak Borer (GSOB), the Kuroshio Shot Hole Borer (KSHB) and the Polyphagous Shot Hole Borer (PSHB), which are deadly to hundreds of tree species including Oak and Avocado varieties.
- Detected a new infestation of Red Imported Fire Ant (RIFA) and with the oversight of (CDFA), implemented a delimitation trapping and eradication program.
- Planned and participated in the second Spray Safe Event (2017) in Santa Barbara County. This event was developed by growers and applicators with a commitment to safe farming, workers safety, and the protection of public health.

# Agricultural Commissioner Weights & Measures

## Program

### *AGRICULTURE (CONT'D)*

- Initiated the training of staff on the use of the statewide California Pesticide Enforcement Activities Tracking System (CalPEATS).
- Participated in the Information Management Committee Technical Advisory Panel (IMTAP) for new Pesticides Around Schools regulations for developing a new GIS mapping and notification system and developed training for staff, and industry.
- Conducted 2018 Worker Protection Safety regulations (WPS) education and outreach for staff and industry.
- Conducted process improvement in the Direct Marketing program to increase compliance and enforcement consistency countywide.
- Continue administrative support to the Agricultural Advisory Committee (AAC).
- Continue to chair the Agricultural Preserve Advisory Committee (APAC).
- Supported staff with professional development.

### **2018-19 Objectives**

- Staff to successfully obtain the required licensing for the new combined Agriculture/Weights & Measures position, and assure that staff is prepared to become certified through the USDA Export Services program as Accredited Certification Officials in order to provide phytosanitary certification services to our local agricultural industry so they can export their local agricultural products.
- The Agricultural Integrated Pest Management Specialist (AIPMS) will continue to provide education and outreach by developing “tailgate” trainings targeting agricultural pest identification and IPM principles to our local industry.
- Continue to collaborate with other agencies including UCCE, UCSB and the community on developing a comprehensive response to the Shothole borer discovery in our county as well as participate in the statewide taskforce.
- Coordinate with the Resource Conservation District (RCD) and the new UCCE Rangeland Advisor on outreach and educational opportunities for ranchers.
- Under (DPR) guidance and oversight, the department will conduct necessary training and outreach and enforcement to licensed cannabis cultivators on the state’s pesticide regulatory program.
- Provide education and outreach of new and existing State Pesticide regulations to staff, pesticide applicators, and structural pest control industry.
- Provide the necessary training and support for the new combined Agriculture/Weights & Measures Inspector position to successfully integrate into all agricultural programs.
- Staff will continue to volunteer support of the (EOC) during natural disasters and support federal agencies with recovery efforts for the agricultural community.
- Support the Santa Barbara County Farm Bureau for the third Spray Safe Event (2019) in Santa Barbara County.

# Agricultural Commissioner Weights & Measures

## Program

### WEIGHTS & MEASURES

The Weights and Measures Program protects businesses and consumers by ensuring the consumer is receiving full and fair measure and to provide equity in the marketplace for business.

### Staffing

Staffing Detail By Budget Program	2016-17 Actual	2017-18 Adopted	2017-18 Estimated Actual	2018-19 Recommended	Change From FY17-18 Ado to FY18-19 Rec
AG COMM/SEALER WGTS-MEAS	0.06	0.08	0.08	0.04	(0.04)
ASST DIRECTOR	0.04	0.03	0.03	0.06	0.02
EDP SYS & PROG ANLST	0.06	0.06	0.06	0.06	(0.01)
DEPUTY DIRECTOR	0.84	0.86	0.86	0.86	(0.01)
ADMN OFFICE PRO	0.34	0.25	0.25	0.35	0.10
AGRI BIOLOGIST	0.01	-	-	0.01	0.01
WGTS-MEASURES INSP	3.81	3.79	3.79	3.80	0.01
ADMN OFFICE PRO SR	0.12	0.07	0.07	0.06	(0.01)
Total	5.29	5.15	5.15	5.23	0.08

FTE counts include regular staff only, and do not include extra help and contractors-on-payroll.

### Revenue & Expenditures

Budget By Categories of Expenditures	2016-17 Actual	2017-18 Adopted	2017-18 Estimated Actual	2018-19 Recommended	Change From FY17-18 Ado to FY18-19 Rec
Salaries and Employee Benefits	\$ 571,756	\$ 638,876	\$ 658,200	\$ 666,800	\$ 27,924
Services and Supplies	36,524	47,374	47,300	54,900	7,526
Other Charges	93,349	85,667	66,400	67,400	(18,267)
Total Operating Expenditures	701,629	771,917	771,900	789,100	17,183
Capital Assets	89,648	-	-	65,000	65,000
Other Financing Uses	-	-	-	15,000	15,000
Total Expenditures	\$ 791,277	\$ 771,917	\$ 771,900	\$ 869,100	\$ 97,183
<b>Budget By Categories of Revenues</b>					
Licenses, Permits and Franchises	443,891	460,000	460,000	465,700	5,700
Charges for Services	9,281	9,000	9,000	9,000	-
Miscellaneous Revenue	11,370	10,400	10,400	10,400	-
Total Operating Revenues	464,542	479,400	479,400	485,100	5,700
Other Financing Sources	3,240	-	-	-	-
Decreases to Fund Balances	67,802	-	-	65,000	65,000
General Fund Contribution	279,659	292,517	292,500	319,000	26,483
Total Revenues	\$ 815,242	\$ 771,917	\$ 771,900	\$ 869,100	\$ 97,183

# Agricultural Commissioner Weights & Measures

## Program

### *WEIGHTS & MEASURES (CONT'D)*

#### **2017-18 Anticipated Accomplishments**

- Staff inspected 100% of the 6,500 commercial weighing and measuring devices in the County. Some of the categories of devices inspected include:
  - 2,700 retail motor fuel meters (gas pumps) were inspected and resulted in a 97% compliance rate;
  - 1,200 small capacity scales (grocery store scales, farmers markets, recycling and shipping scales) were inspected and resulted in a 95% compliance rate;
  - 325 heavy capacity scales (vehicle scales, livestock and winery scales) were inspected and resulted in an 80% compliance rate;
  - 125 taxi meters were inspected and resulted in a 90% compliance rate.
- Collaborated with the District Attorney's (DA) office on consumer protection civil cases.
- Issued 20 Administrative Civil Penalties for price inspection overcharges.
- Participated as a voting delegate at annual conferences, a forum for consensus standards.
- Replaced aging 20-gallon Liquefied Petroleum Gas (LPG) inspection equipment unit with a more efficient and safer prover unit in order to ensure appropriate testing of (LPG) meters.
- Supported businesses during the recovery of the Montecito debris flow disaster.
- Supported staff with professional development.

#### **2018-19 Objectives**

- Educate the public on the Weights and Measures program and its protection of the consumer and the safeguard equity in the marketplace.
- Continue to work with State partners on developing testing procedures for alternative energy fuel sources, such as electric vehicle charging stations and transportation measuring system companies.
- Under California Division of Measurement Standard's (DMS) guidance and oversight, conduct training, outreach and enforcement on the regulatory program of device and package inspections of licensed cannabis businesses.
- Provide the necessary training and support for the new combined Agriculture Weights & Measures inspector position to successfully integrate into all weights & measures programs.
- Staff will continue to volunteer support of the (EOC) during natural disasters and recovery efforts.
- Replace the aging High Flow Petroleum inspection trailer unit with a more efficient and safer testing unit.