



Issues That Affect Our Community
Support the Public Can Count On





Public Health Issues



Communicable Diseases

- West Nile Virus, Pandemic Flu, SARS, Avian Flu, TB



Access to Health Care

- MIA, Pharmacy



Bioterrorism

- Small Pox, Anthrax, Ricin



Safety Net

- Virtual Hospital



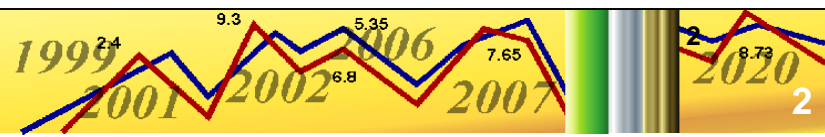
Chronic Disease

- Obesity, Heart Disease, Asthma



Future Trends

- Health Care Professional Recruitment
- Technology
- Funds



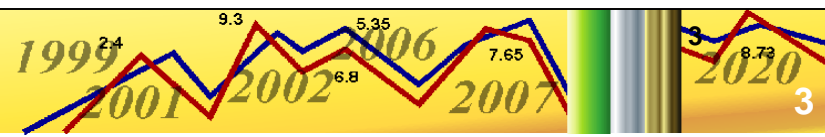


Communicable Diseases

Infectious Diseases



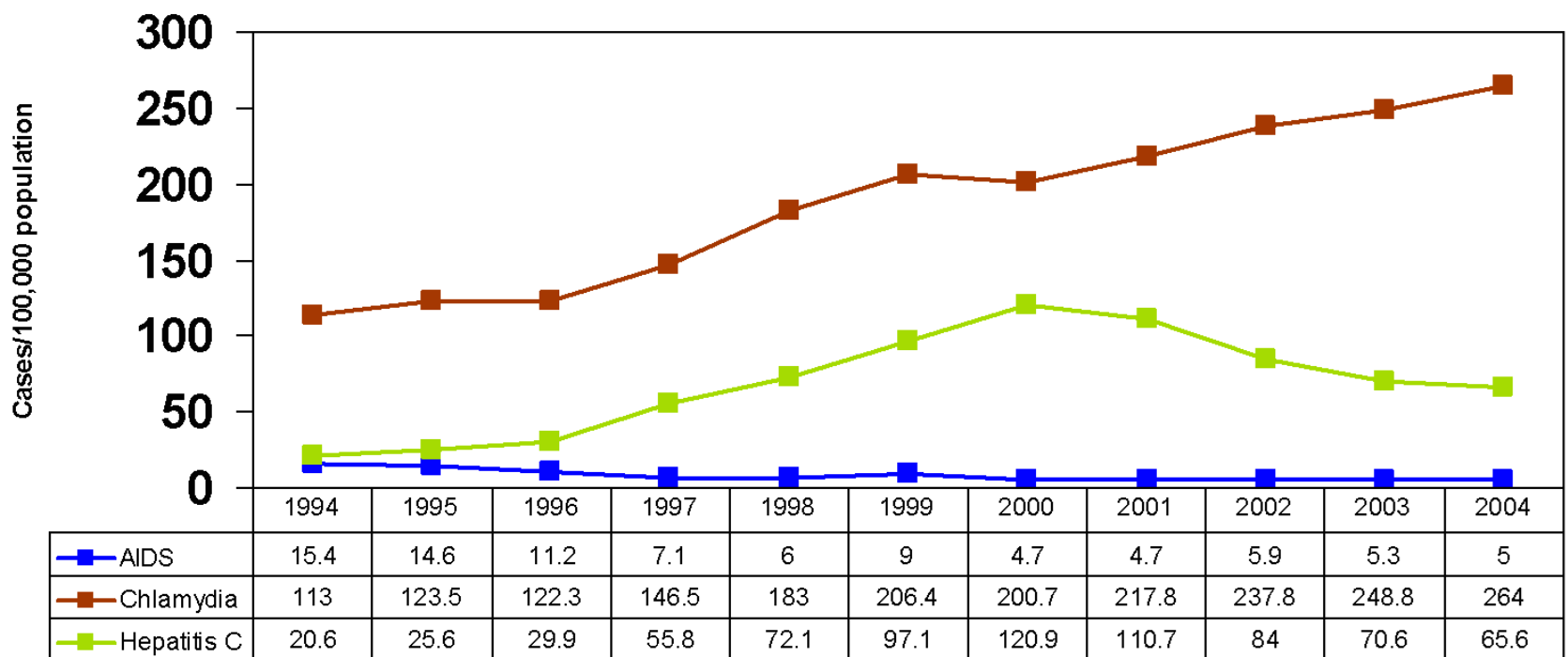
- West Nile Virus
- Pandemic Flu
- SARS
- Avian Flu
- Tuberculosis





Communicable Diseases

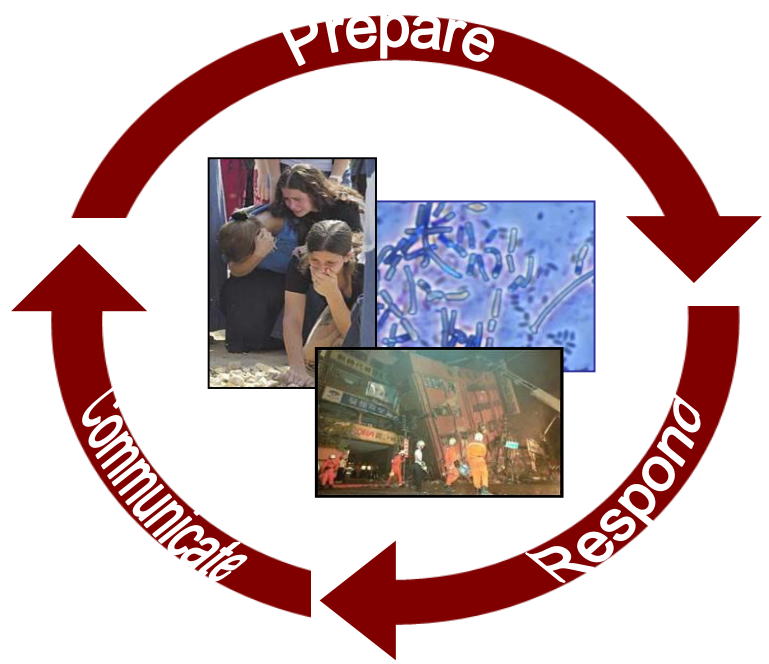
AIDS, Hepatitis C, and Chlamydia Rates Santa Barbara County: 1994-2004



Source: CMR reports. HARS reports. *Race/Ethnic Population with Age and Sex Detail, 1970-2040, CA* Dept. of Finance

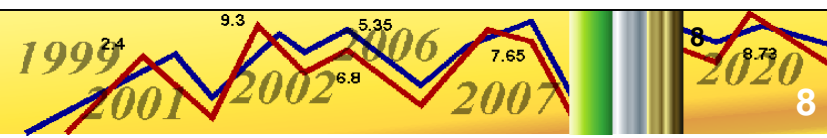


Bioterrorism



Threats

- Small Pox
- Anthrax
- Ricin
- Natural Disaster



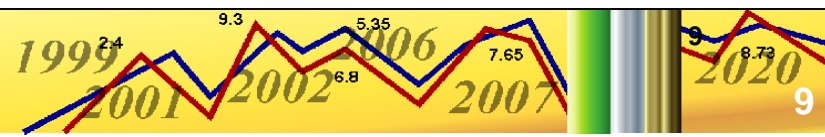
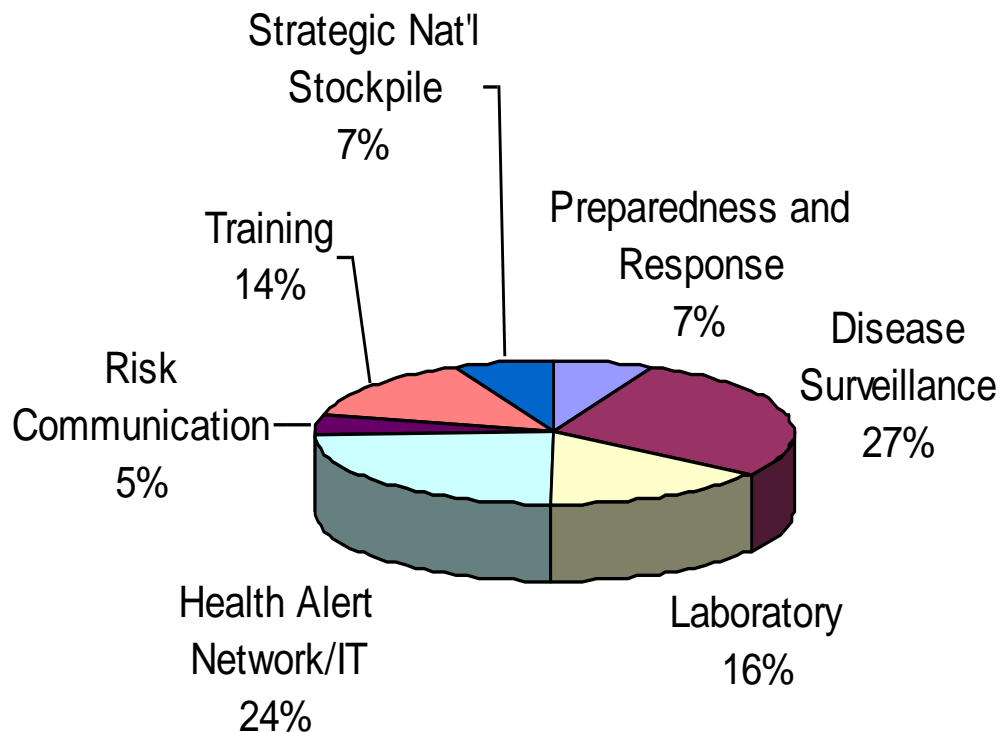


Bioterrorism



PHD Emerg Response for Bioterrorism

2002-2005: \$1,908,953





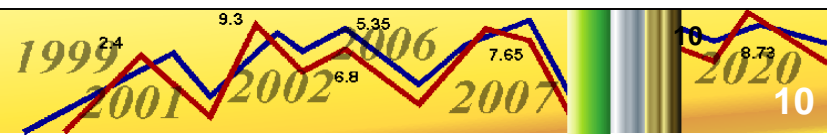
Chronic Disease Prevention

Obesity

- Obesity is increasing: more than 25% of children in grades 5,7, & 9 are overweight
- Obesity accounts for a 12 % growth in health care spending
- Obesity is a leading cause of diabetes
 - Children now getting “adult-onset” diabetes
- A continuing trend means 1 in 3 babies will become diabetic resulting in a loss of life of about 15 years



This may be the first generation of American children to have shorter life-spans than their parents

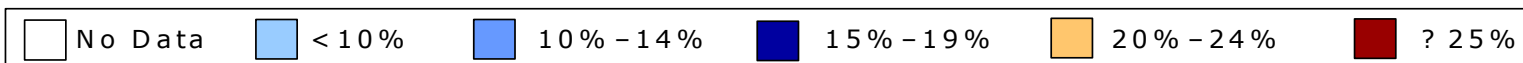
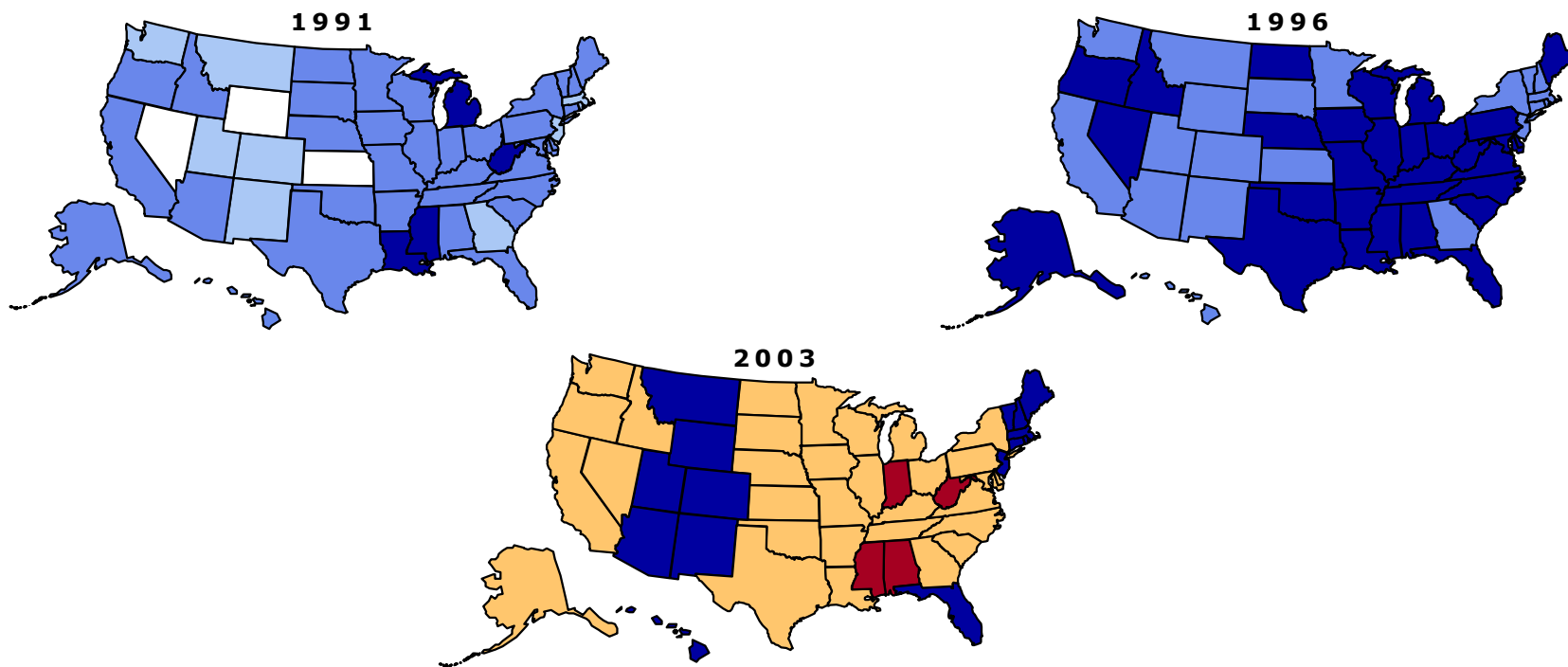




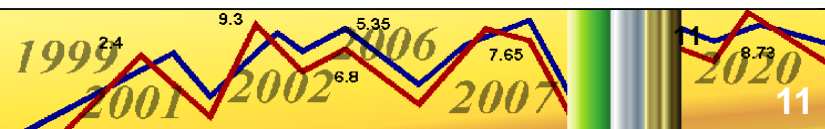
Obesity Trends* Among U.S. Adults

BRFSS, 1991, 1996, 2003

(*BMI ≥30, or about 30 lbs overweight for 5'4" person)



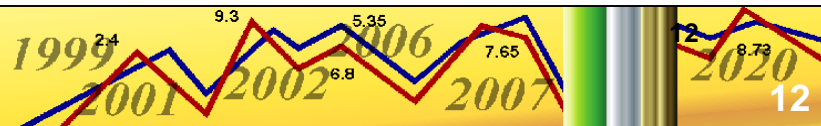
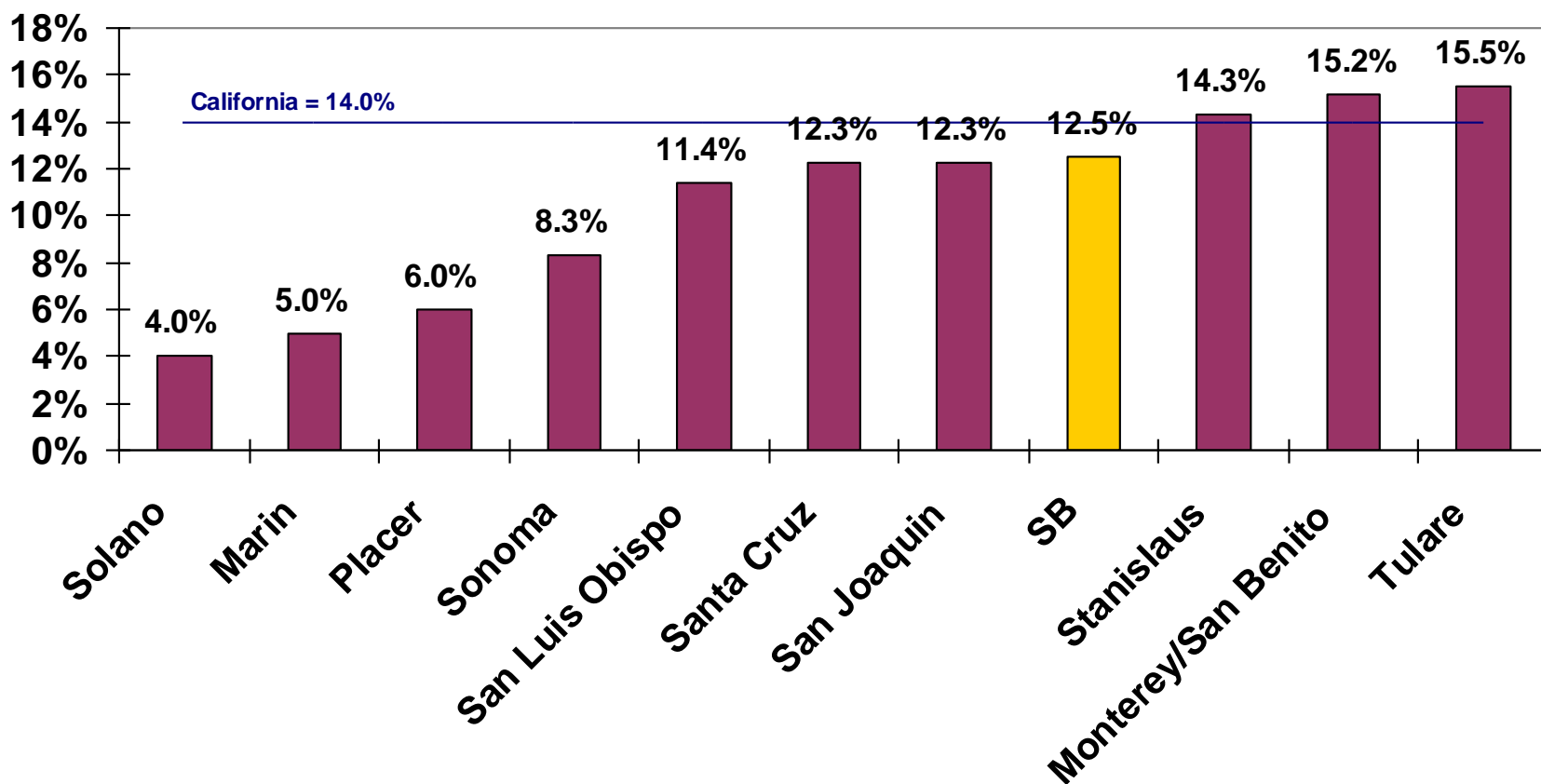
Source: Behavioral Risk Factor Surveillance System, CDC.





Access to Care

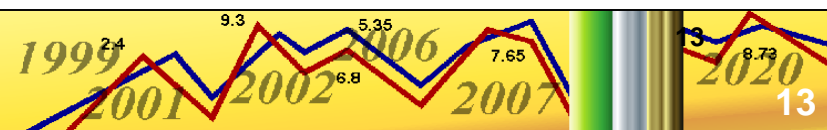
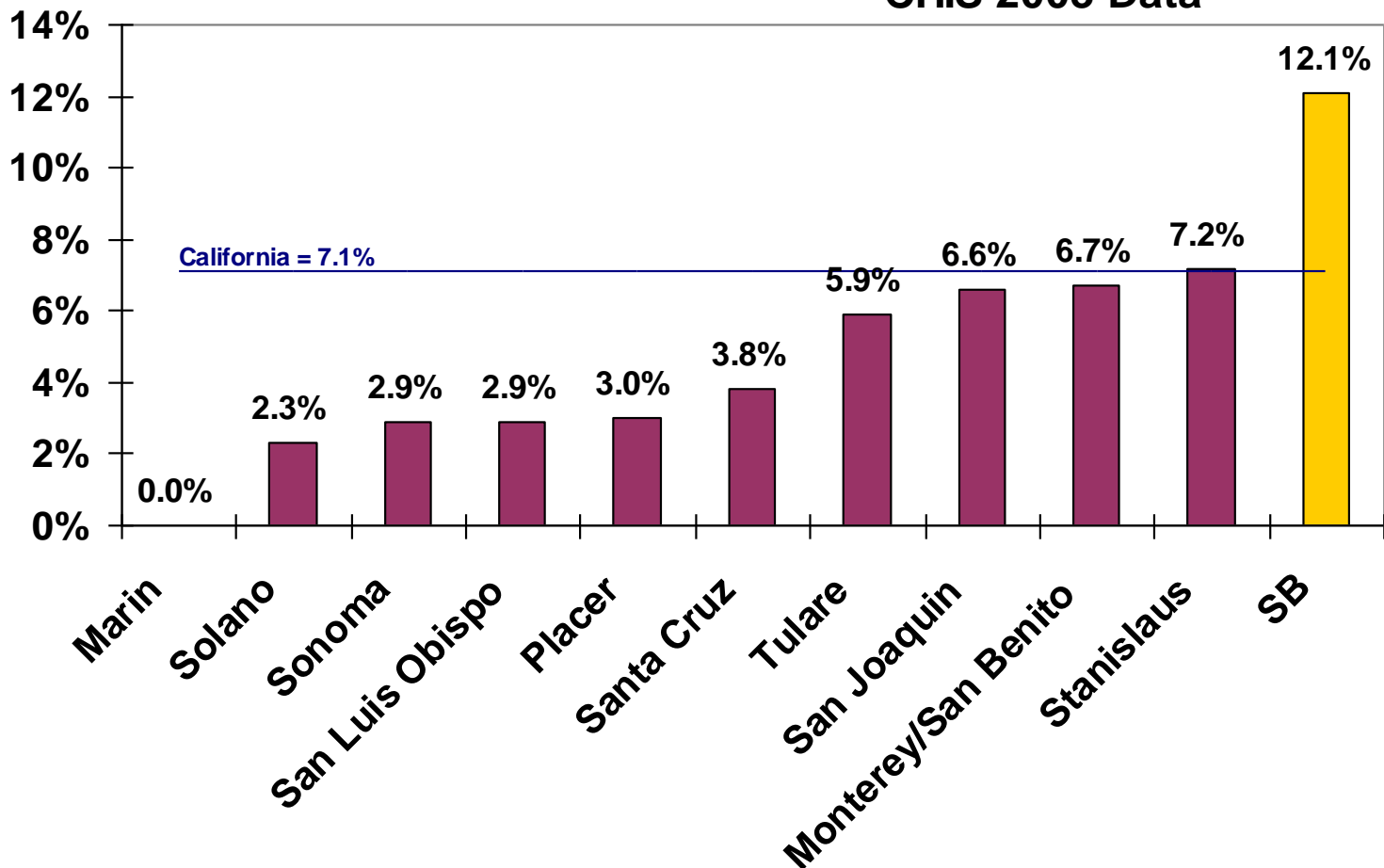
Uninsured Residents Santa Barbara & Benchmark Counties CHIS 2003 Data





Access to Care

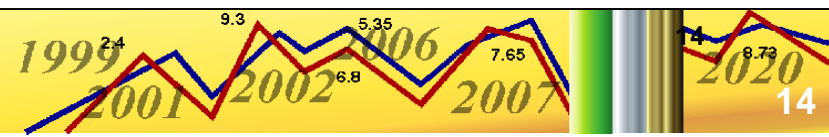
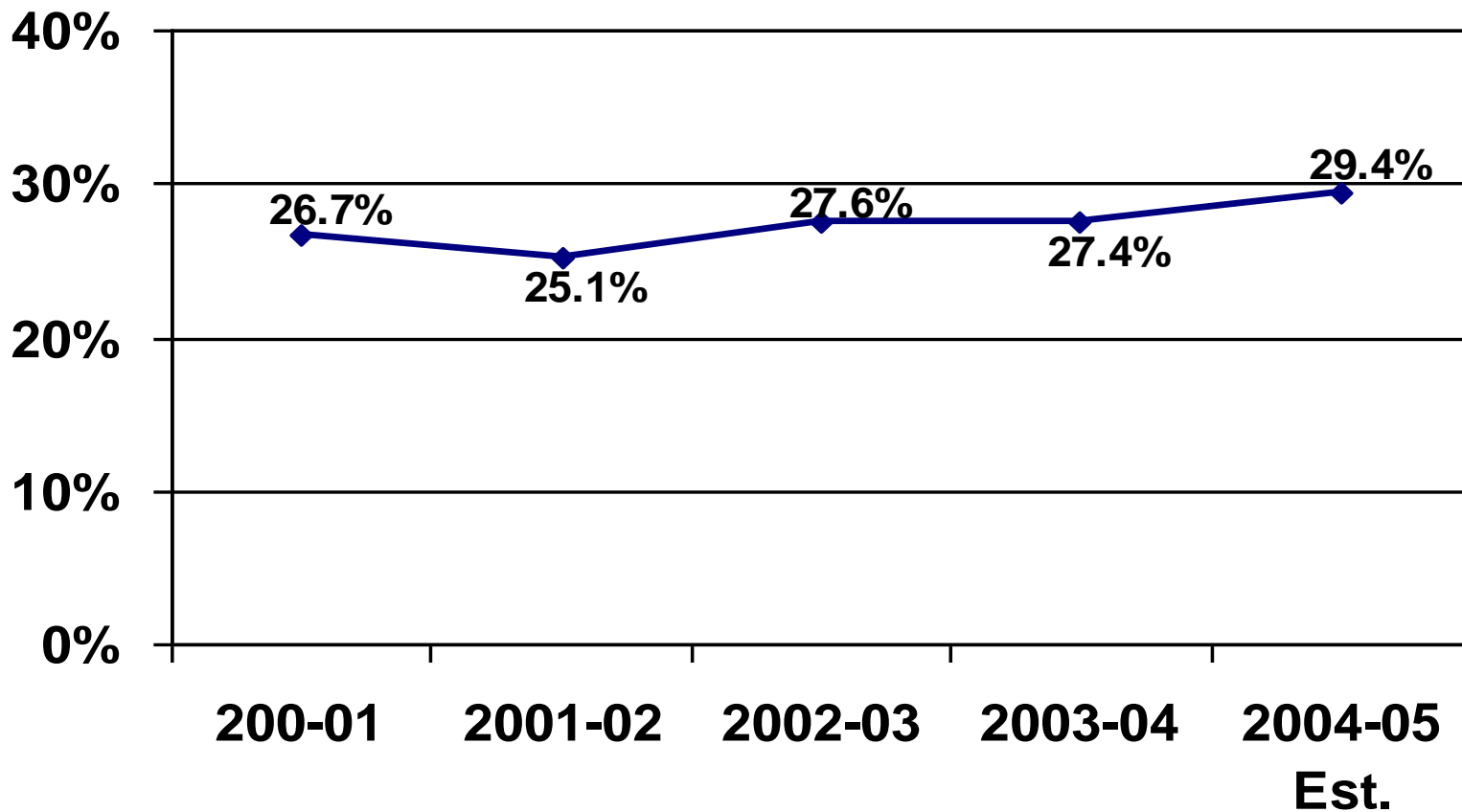
Uninsured Children Aged 0 to 17 Santa Barbara & Benchmark Counties CHIS 2003 Data





Access to Care

Uninsured PHD Patients





Safety Net

PHD Clinic Locations

Santa Maria Health Clinic
Santa Maria Women's Health Center

Cuyama Health Clinic

Lompoc Health Clinic
Lompoc Wellness Center

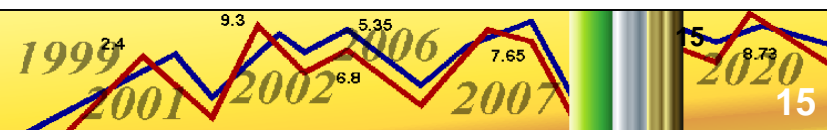


Franklin Clinic

Calle Real Health Clinic

PHD Clinics

- 32,000 patients/yr
- Over 115,000 clinic visits/yr
- 12,800 SBRHA assigned members

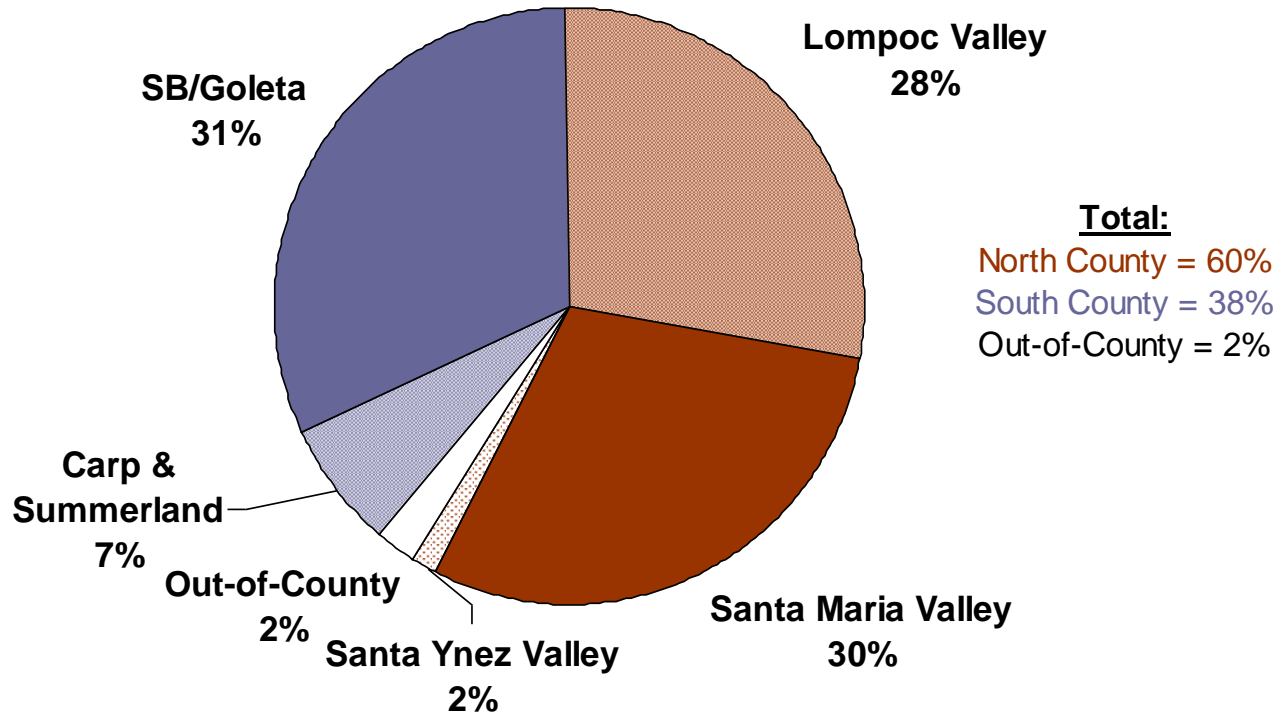




Safety Net

Where Do PHD Patients Live?

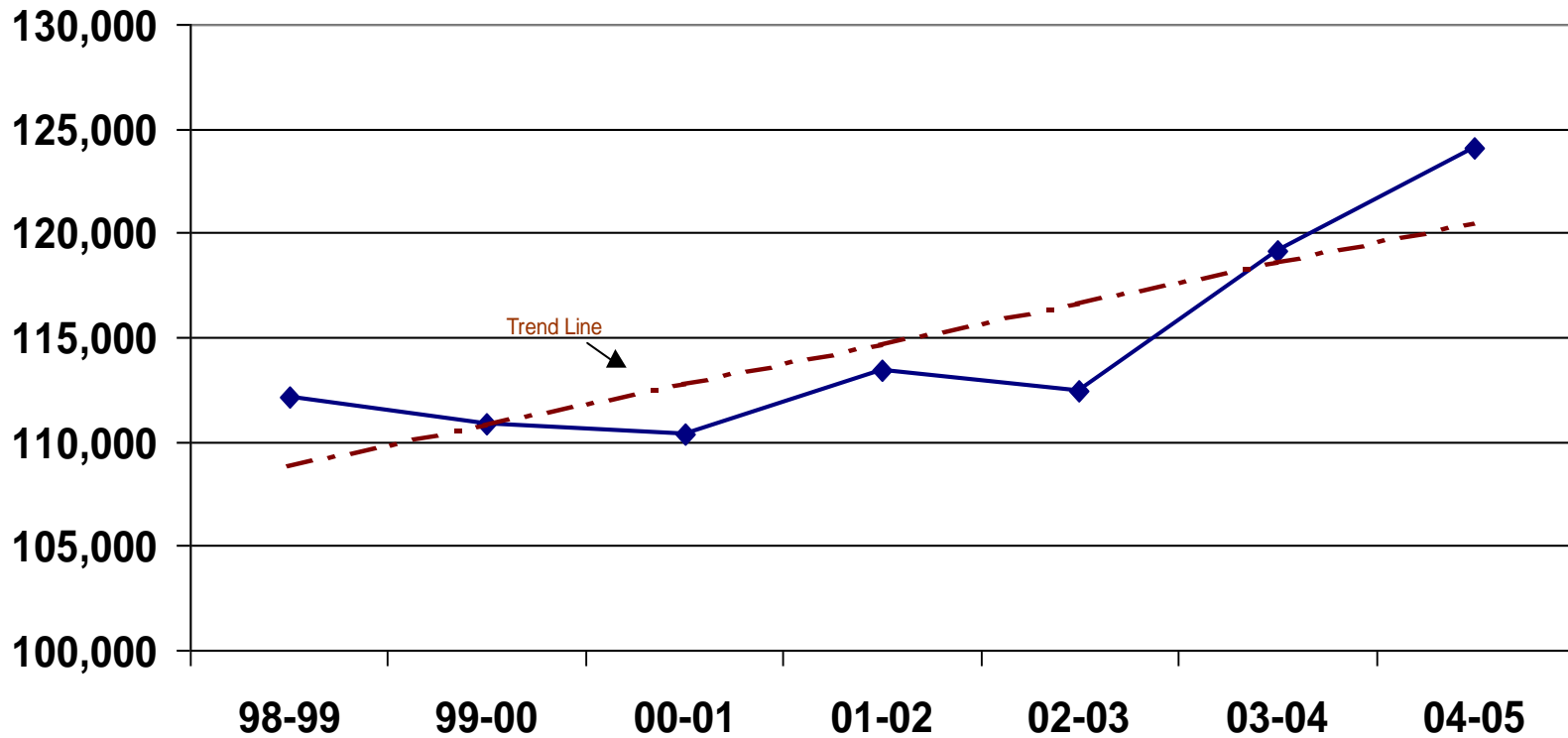
Total FY 03-04 Clients = 29,102





Safety Net

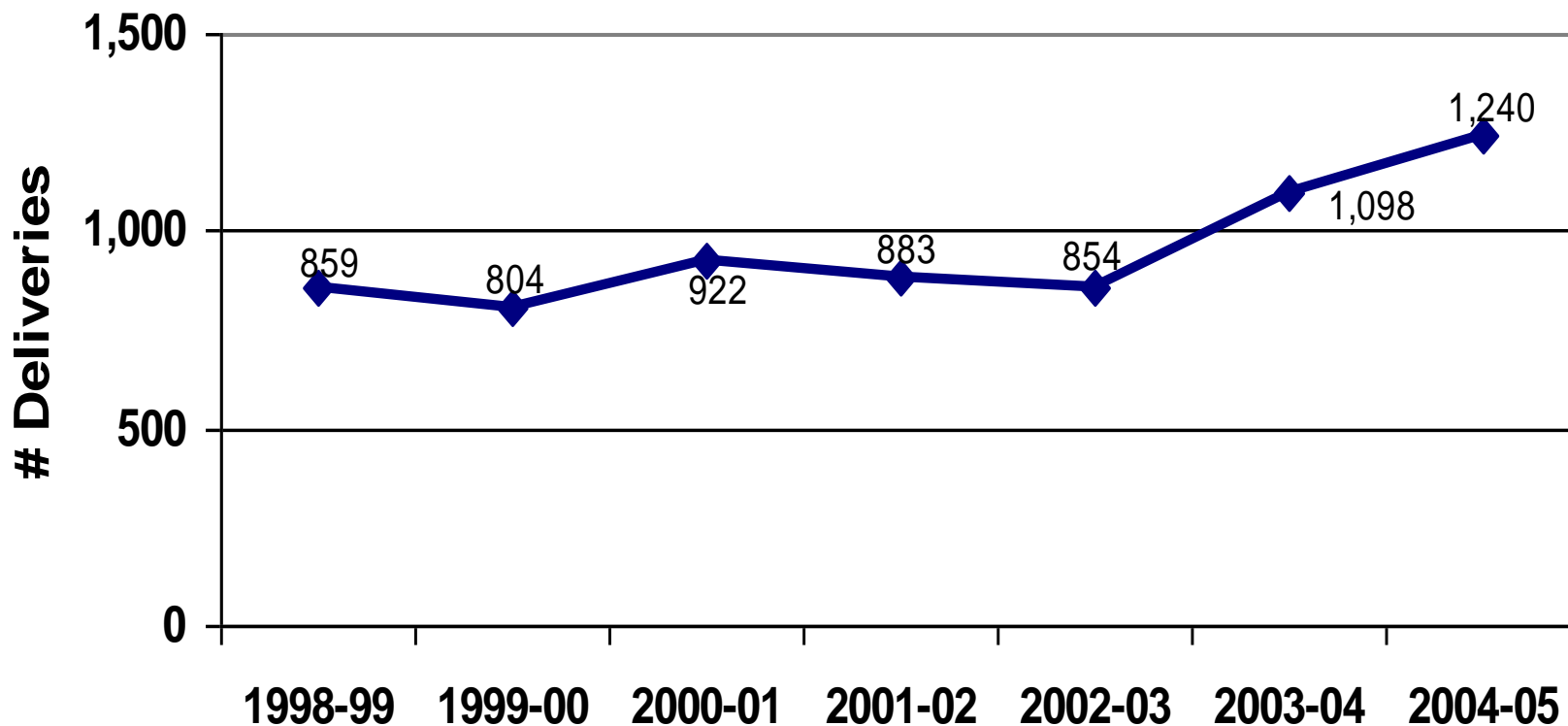
PHD Clinic Visits 1998-99 through 2004-05





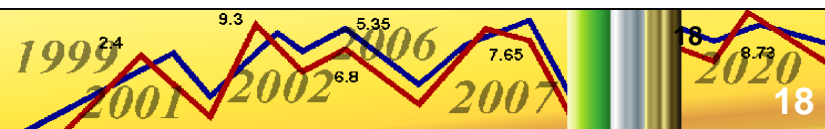
Safety Net

PHD Obstetrical Deliveries



Total deliveries in SB County was 6,204 in 2004.

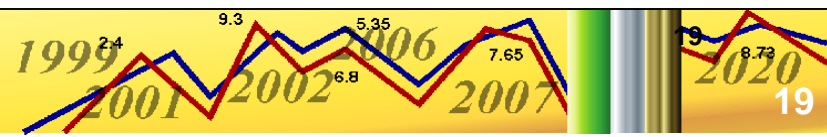
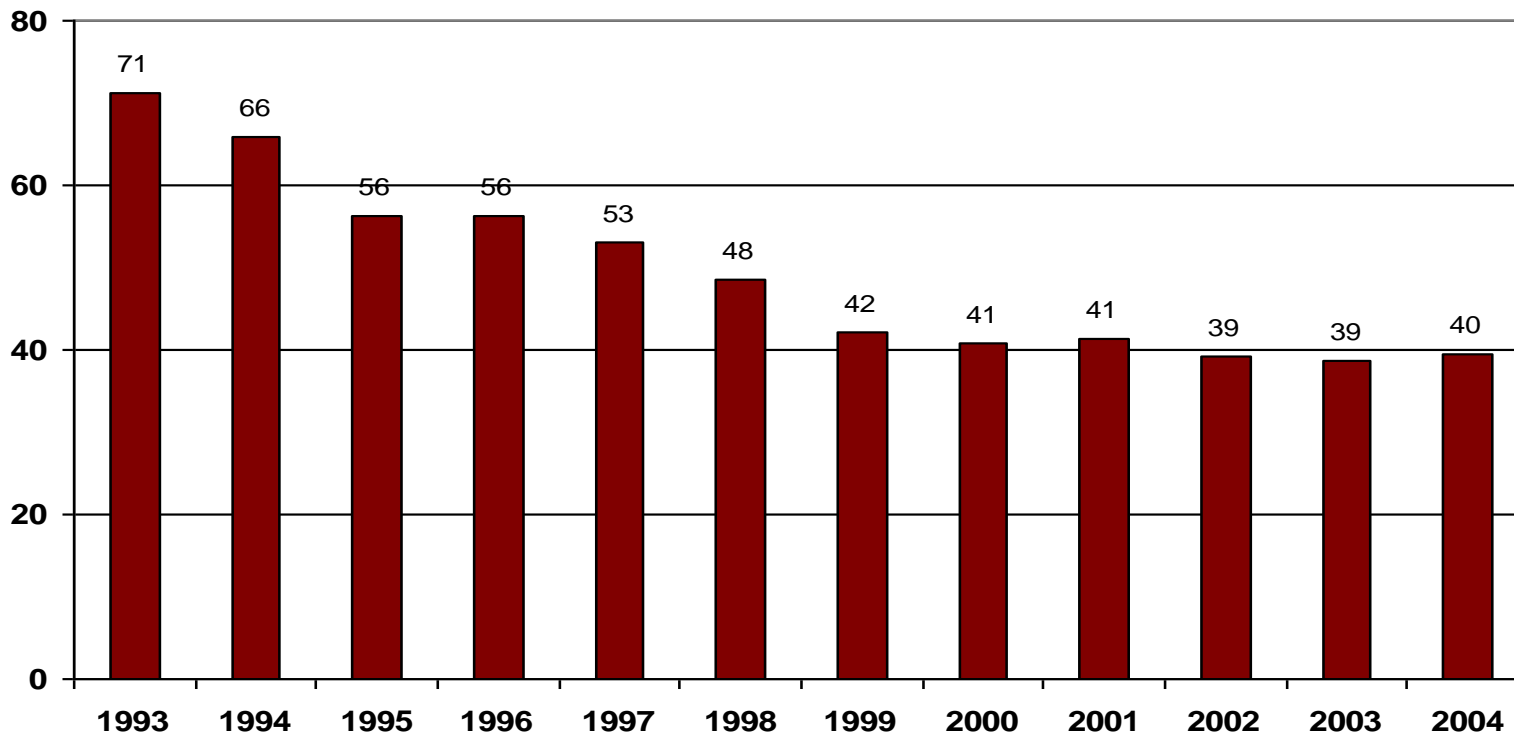
Est.





Safety Net

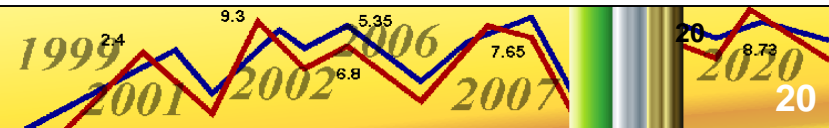
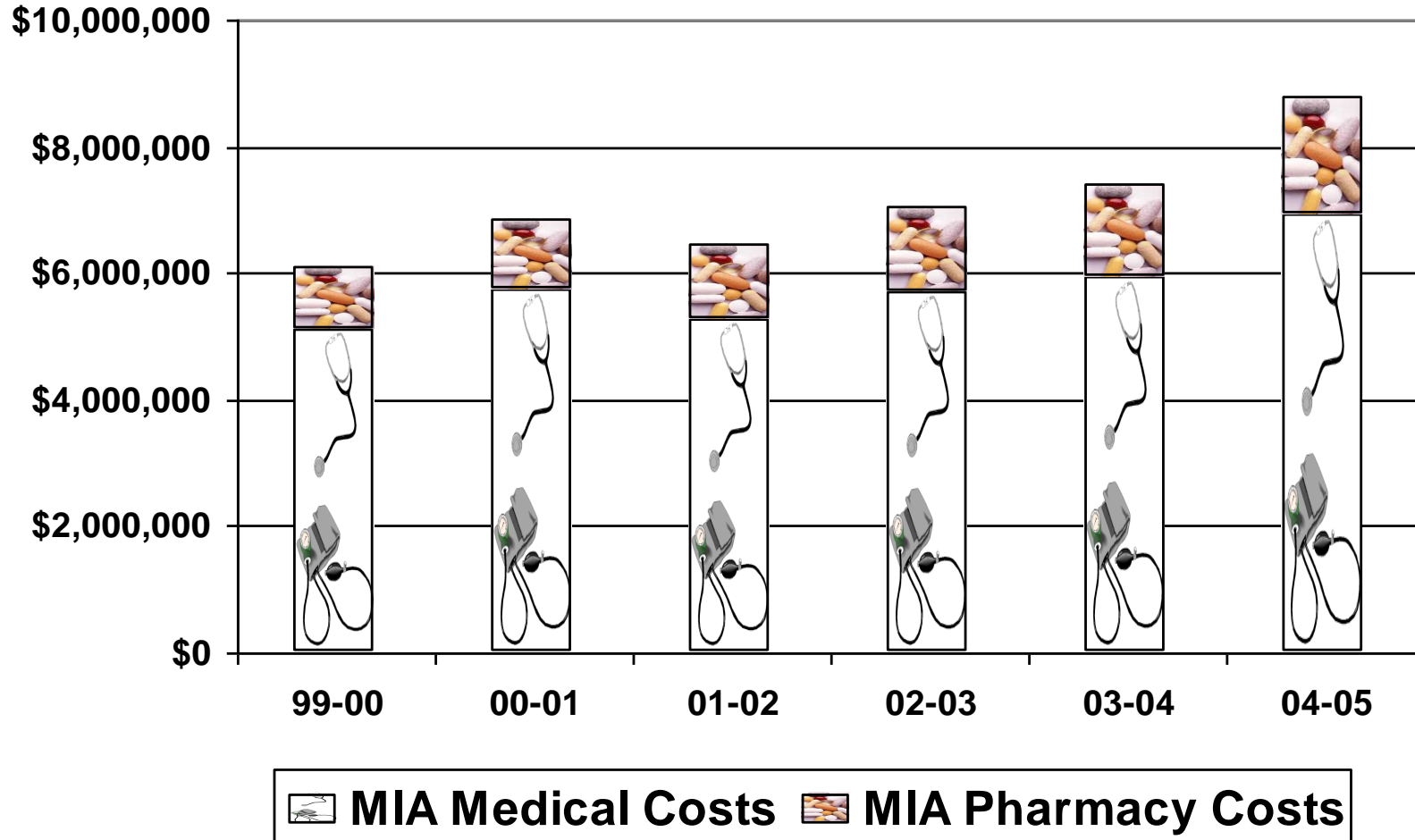
SB County Birth Rate Among Mothers Age 15-19





Safety Net

MIA Program Costs



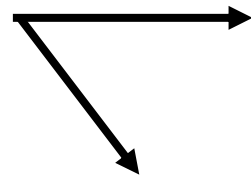


Safety Net

Partnerships: Strengthening the Safety Net



\$5-7M General Fund

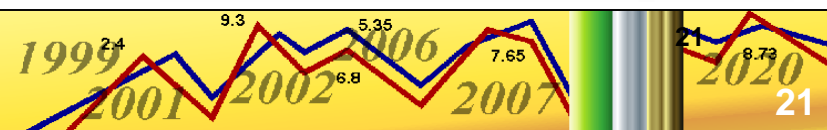
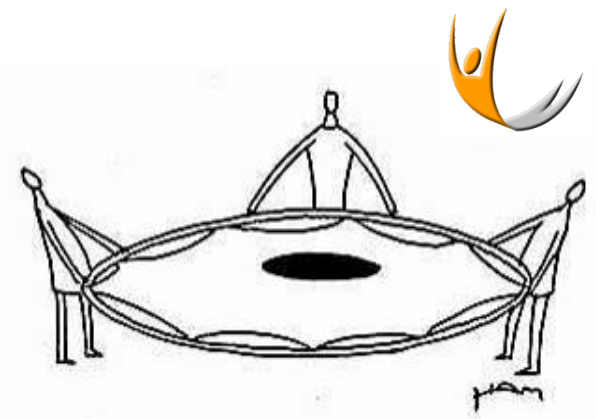


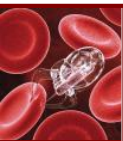
Hospital Partners

- Marian Medical Center
- Cottage Health Systems
- Goleta Cottage Hospital
- SY Cottage Hospital
- Lompoc District Hospital
- Rehab Institute at SB

Care Partners

- Private GP's
- Private Specialists
- SBRHA
- Ambulance Providers
- Community Clinics

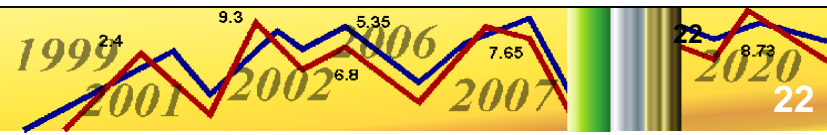




The Future

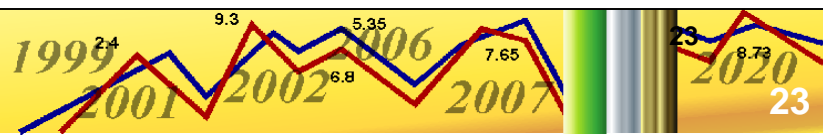
A Look at the Future

- Health Professional Shortage
 - 1/2 of Public Health's 94 nurses plan to leave the County within the next 5 years
- Technology Advances
 - Digital Radiology
 - Electronic Medical Record (EMR)



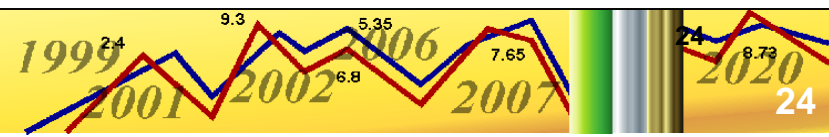
What's On the Horizon?

- Emerging Infectious Diseases
 - West Nile Virus
 - Pandemic Flu
 - Avian Flu
- Chronic Diseases
 - Asthma
 - Obesity-related conditions (Diabetes, heart disease, hypertension, etc.)



PHD Strategic Initiatives

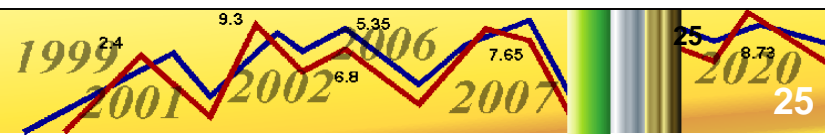
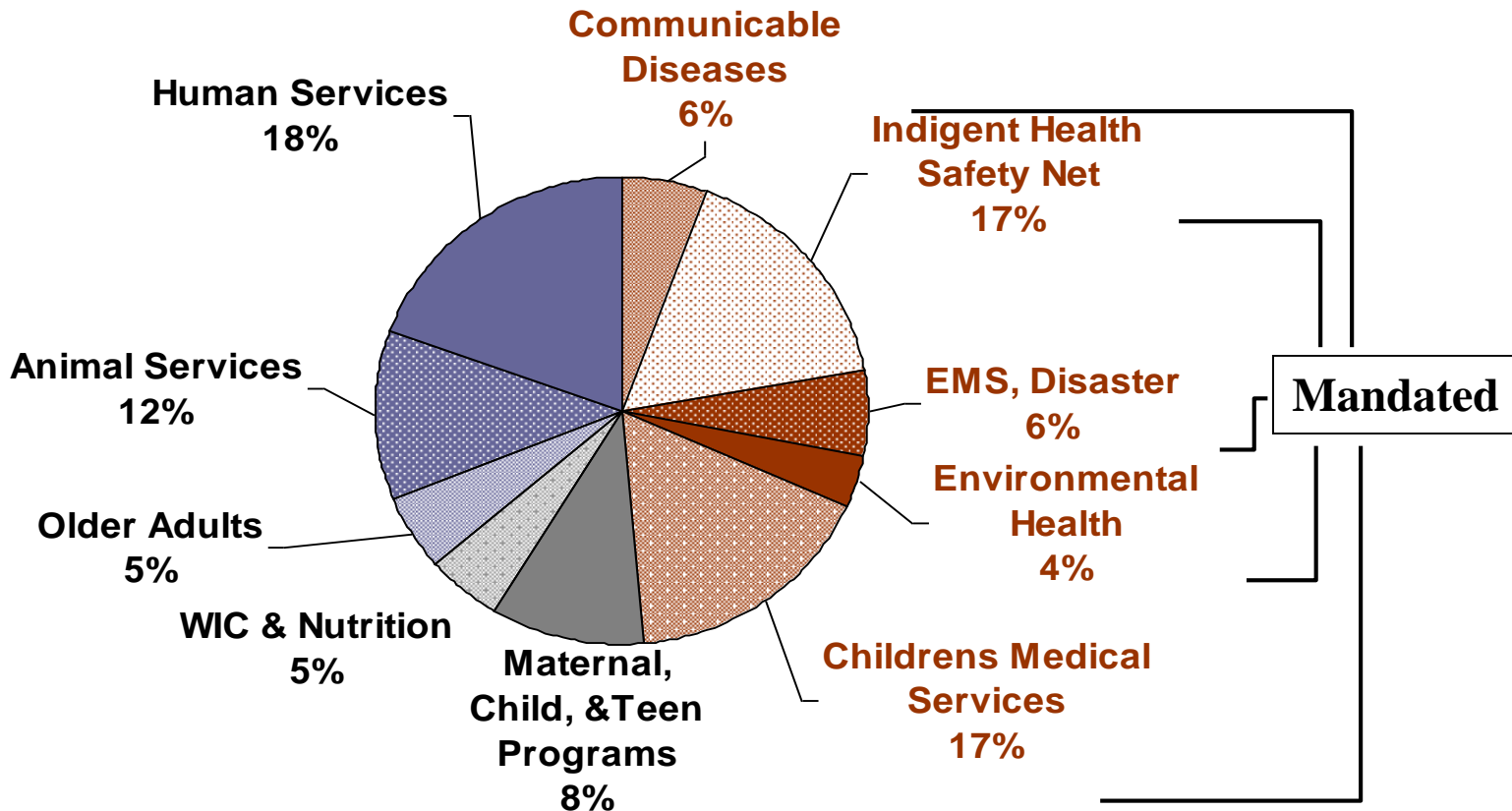
- **Correct the Structural Deficit**
 - Relocate programs, evaluate service levels, streamline processes
 - Continue to secure new revenue sources
- **Maintain access to care:**
 - Specialty care access and inpatient care
 - Professional recruitment and retention
- **Build infrastructure**
 - Digital Radiology
 - Electronic Medical Record
 - Achieve appropriate clinic staffing levels





PHD Use of General Fund

FY 2004-05





Public Health Department Revenue and Expenditure Trend

