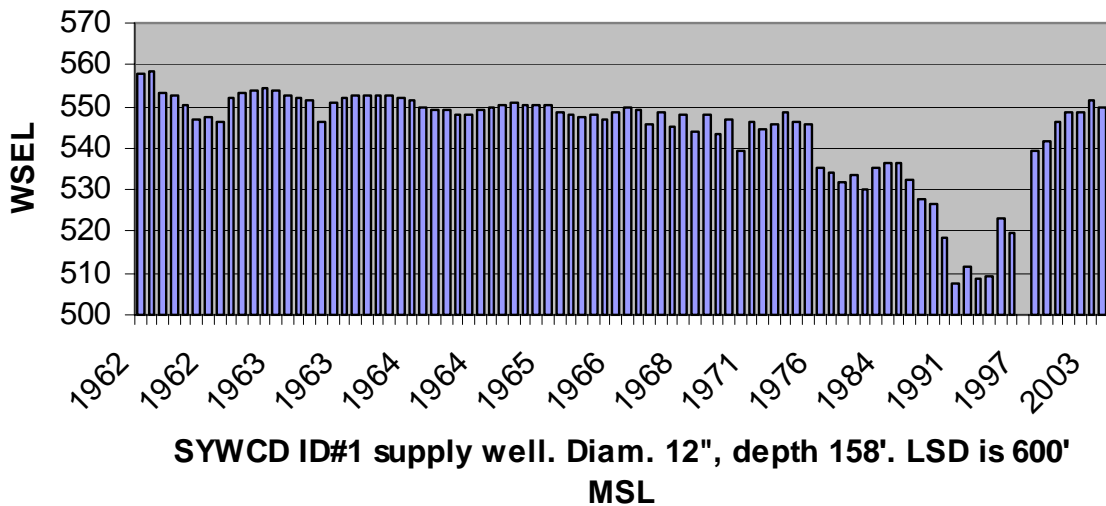


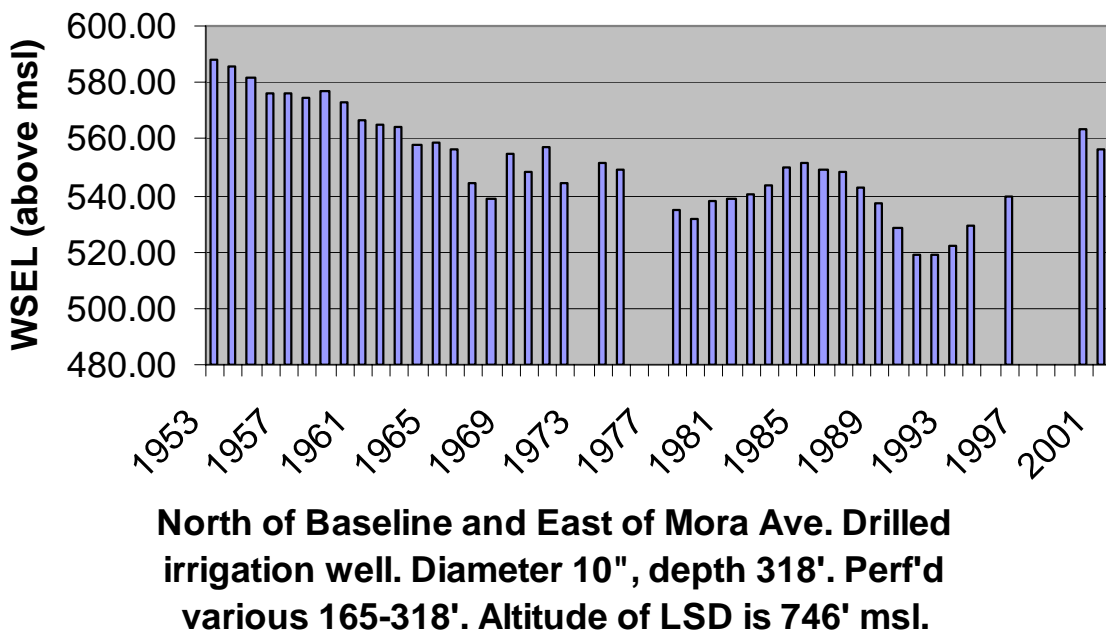
Appendix A- Selected Hydrographs



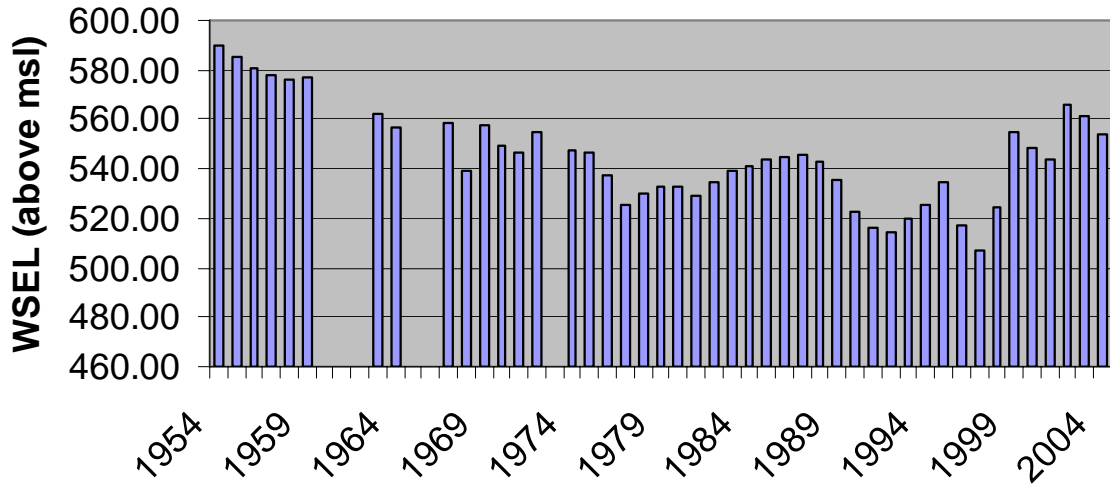
Santa Ynez Basin - 6N/30W-7G5



Santa Ynez Basin 7N/30W-33M2

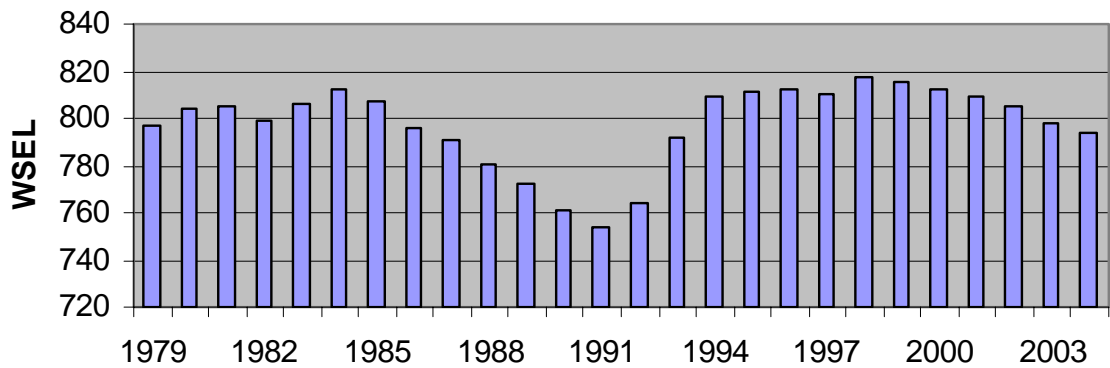


Santa Ynez Basin - 7N/30W-29N2



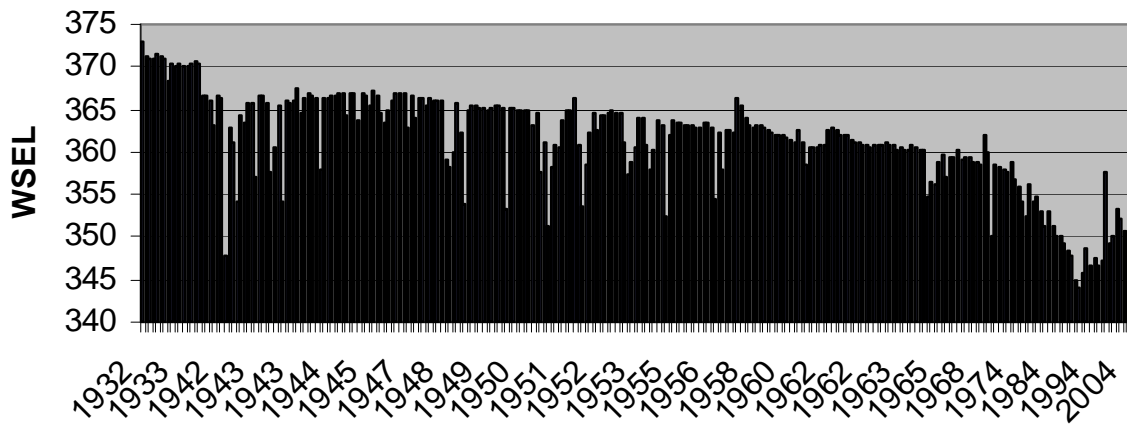
Drilled irrigation well, diameter 16", depth 485'.
Altitude of land surface datum is 820' msl.

Santa Ynez Basin - 7N/31W-23P1



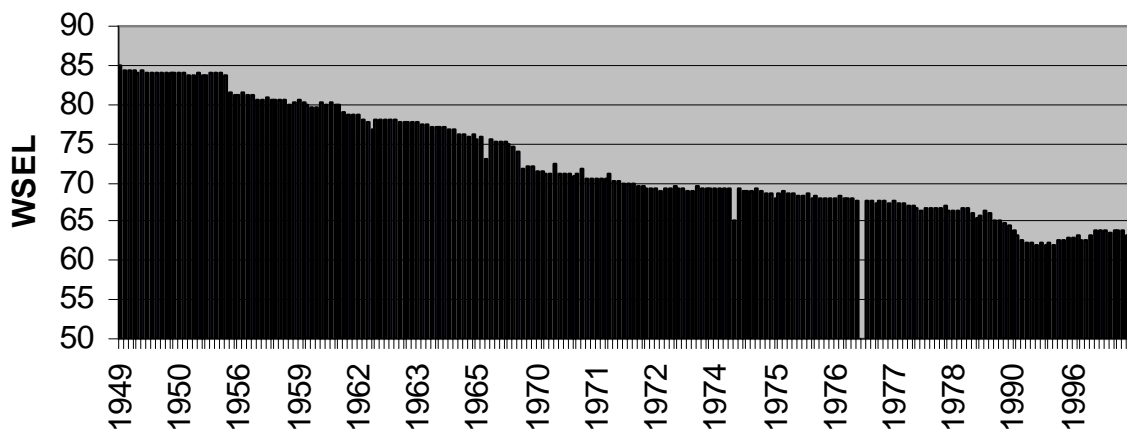
In Los Olivos 450' E of Alamo Pintado Ck. Drilled irrigation well. Diam. 8", depth 141'. LSD is 822' MSL

Buellton Uplands Basin - 6N/32W-6K1



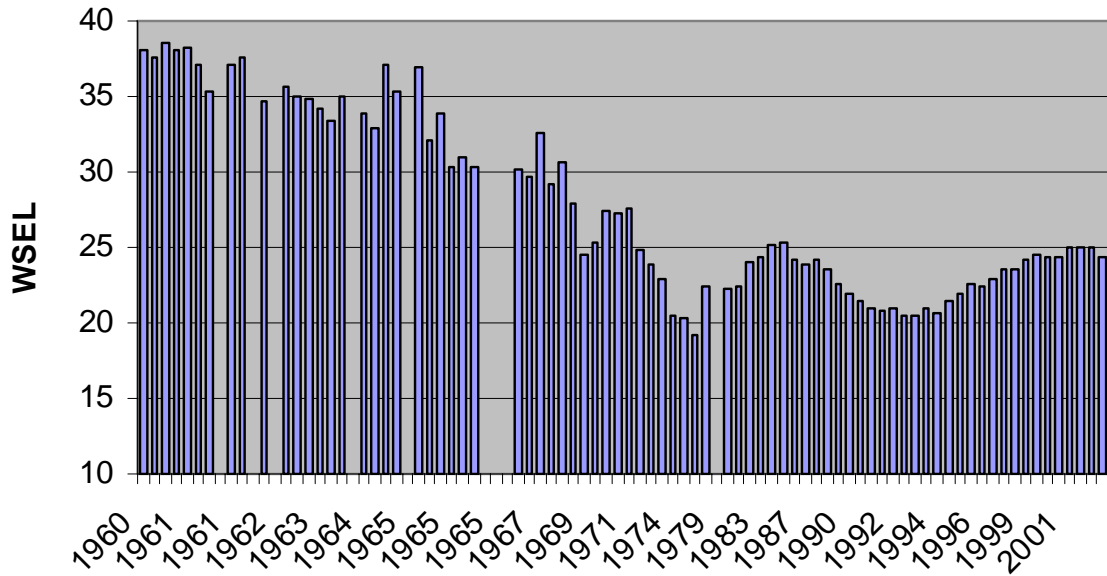
6 mi. W of Buellton S of hwy 246 and W of Mail Rd. Drilled domestic well. Diam. 12", depth 74'. LSD is 383.55 MSL

Lompoc Uplands Basin - Well 7N/34W-12E1



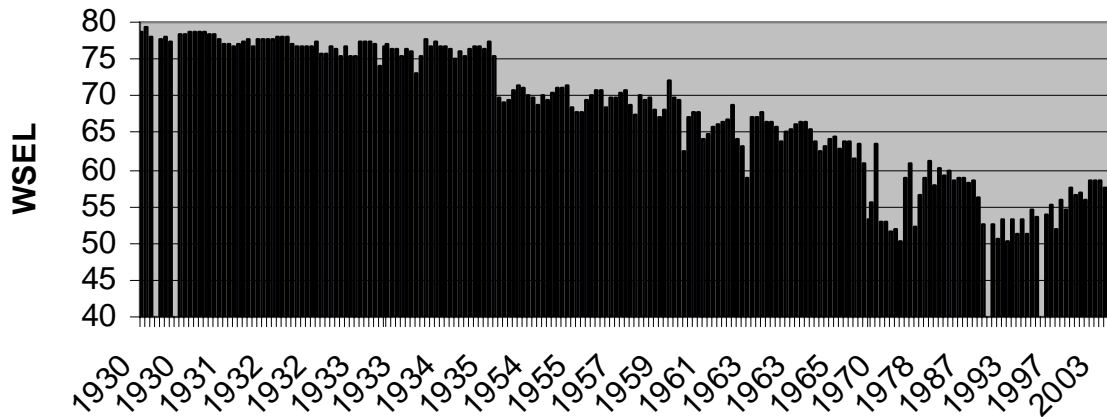
N of Mission Hills, 75 ft. NW of Oil Co. Rd., .95 mi. E and NE from Rucker Rd.

Lompoc Uplands Basin - Well 7N/34W-9H5



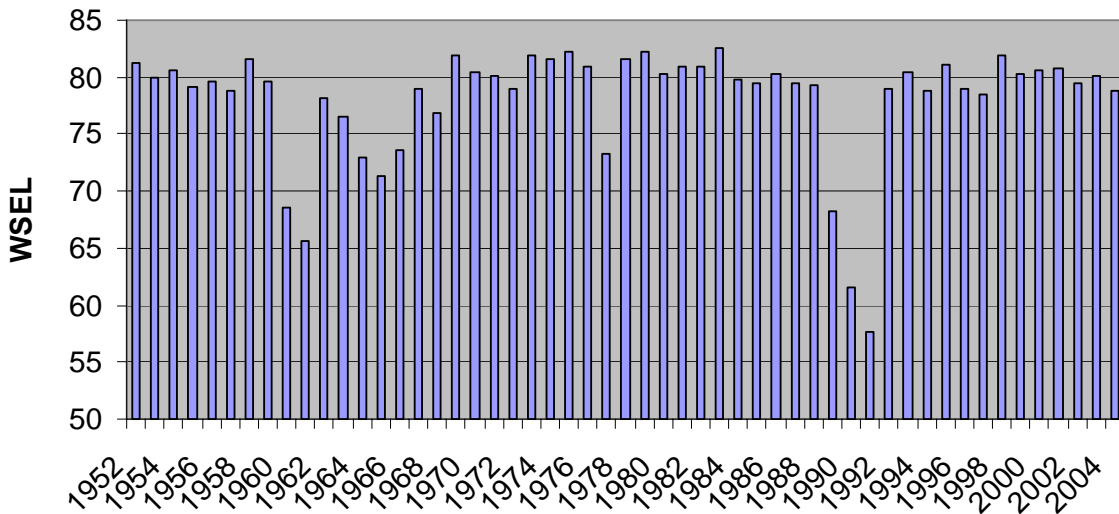
From Vandenberg Village Country Club parking lot S on the golf cart Rd. to well S side of large tank

Lompoc Basin - Well 7N/34W-24N1



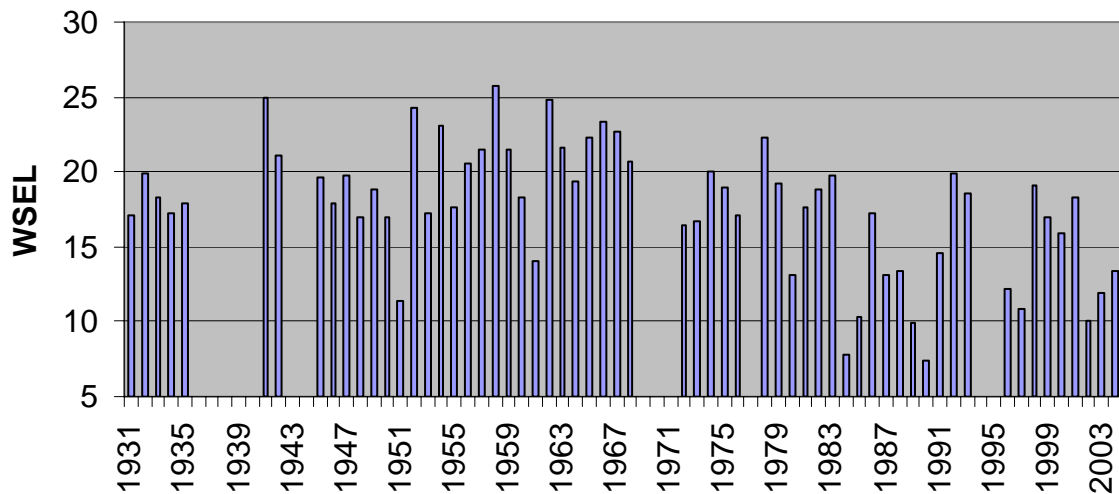
W of Purisima Mission entrance 150 ft. and 80 ft. N of Lompoc-Casmalia Rd.

Lompoc Basin 7N/34W-35K9



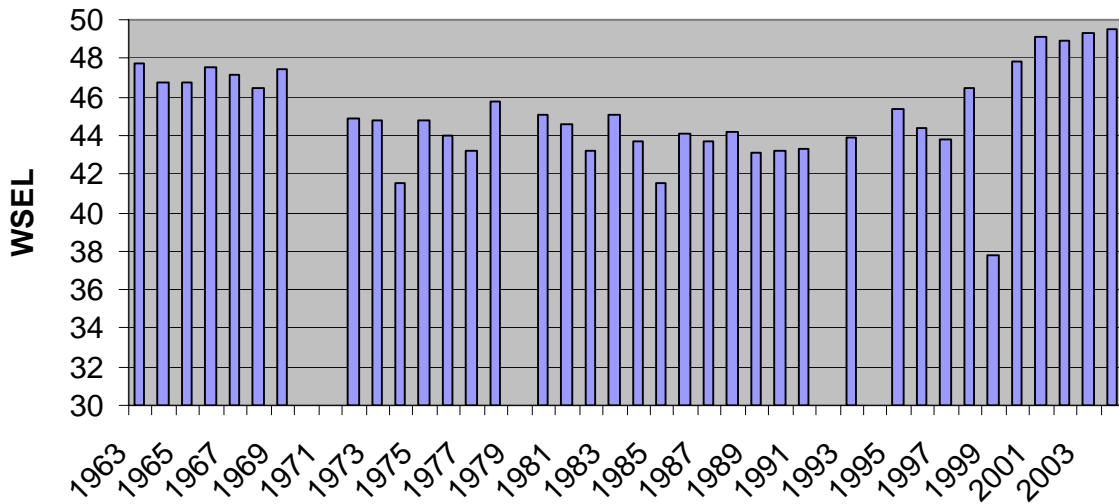
Drilled irrigation well. Diam. is 16", depth is 128'. LSD is 101'.
Perf's 52-80', 112-124'

Lompoc Basin 7N/35W-22J1



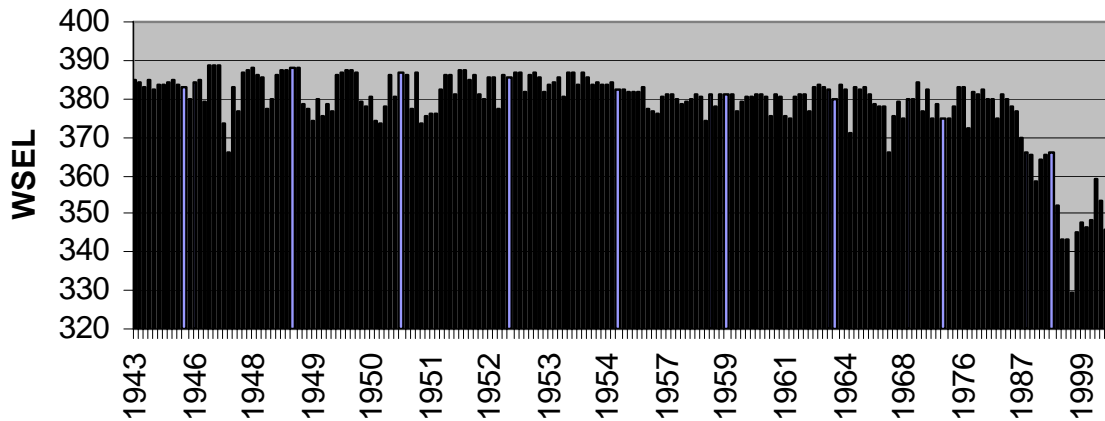
Drilled irrigation well. Diam. is 16", depth 182'. LSD is 31.8'.
Perforated 133-180'

Lompoc Terrace 7N/35W-27P1



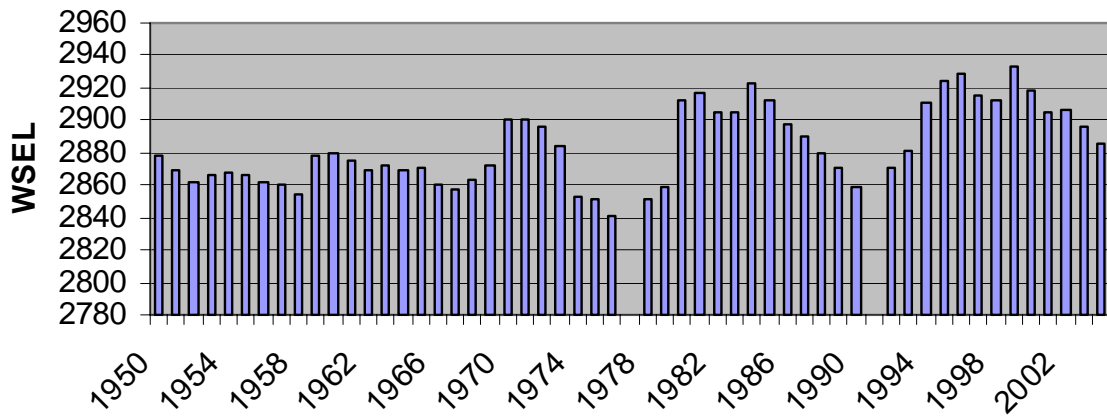
On VAFB, drilled observation well. Diam. is 6", depth is 677'.
LSD is about 270'. Perforated 263-577'.

San Antonio Basin - 8N/33W-20R1



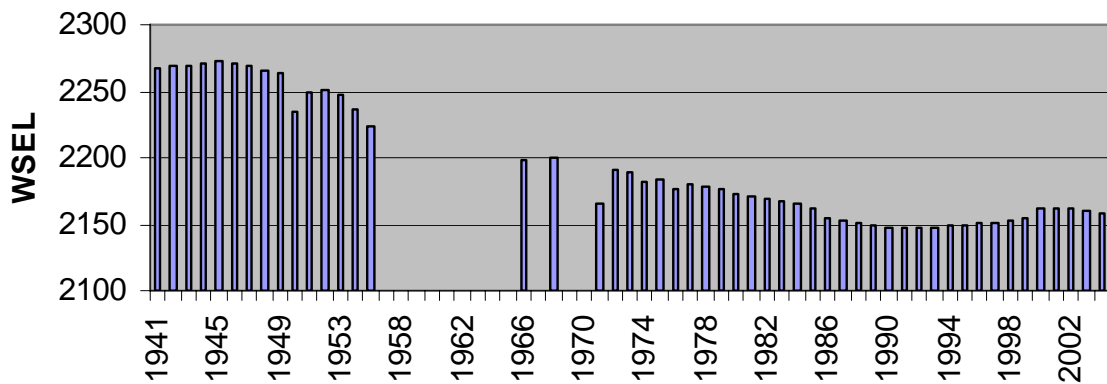
W of Los Alamos on Batchelder Rd. and 50' S of Hwy 135.
Drilled water table well. Diam 10", depth 75'. LSD 410' MSL

Upper Cuyama Basin 9N/24W-33M1



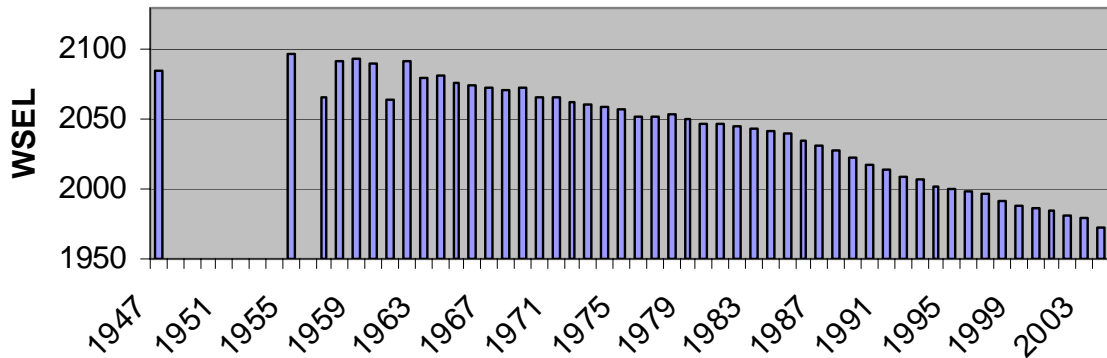
Quatal Cyn. nr Ventucopa. Diam. 13", depth 233'. LSD is 3049'

Cuyama Basin - 10N/25W-30F1



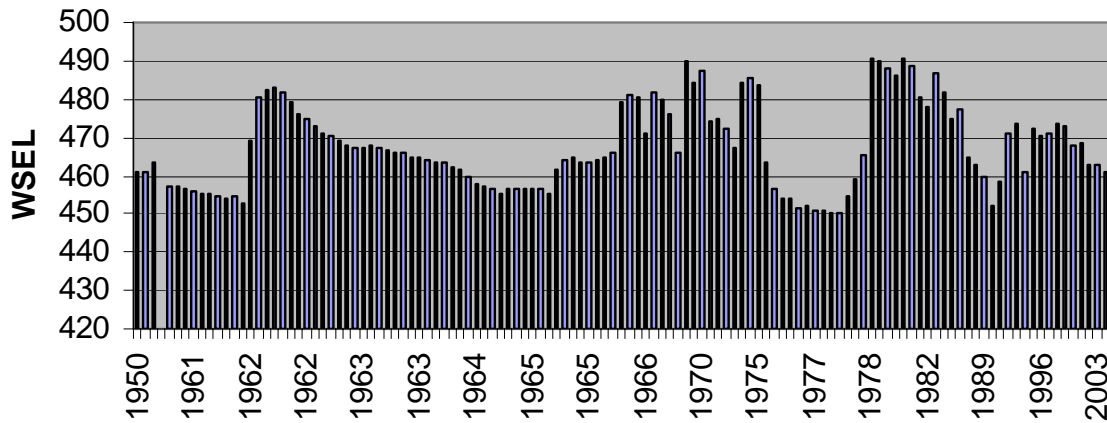
60' W of Kirchenmann Rd. and .84 mi. S of hwy 166. Drilled unused well. Diam 16", depth 212' in 1970. Perf'd 124-370'. LSD is 2320' MSL

Cuyama Basin - 10N/26W-4R1



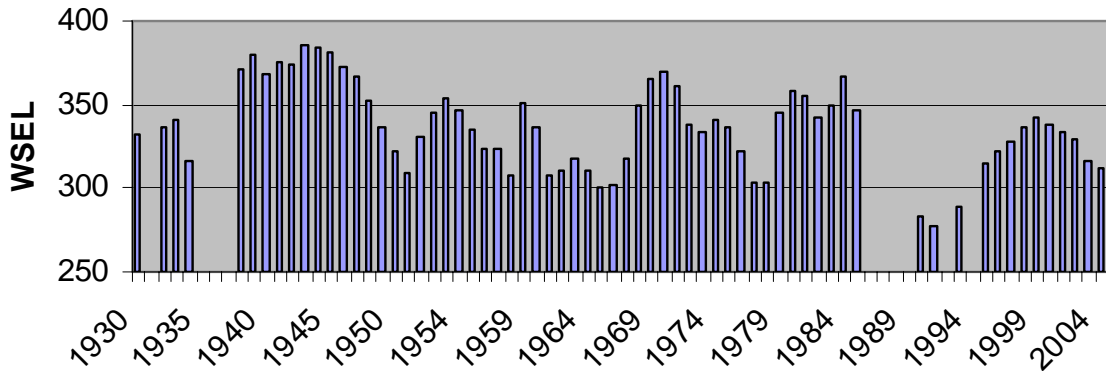
On Russel Ranch .64 mi. N of Cuyama R. crossing. Next to water tower. Drilled domestic well. Diam. 16", depth 238', perf'd 108-232'. LSD 2116' MSL

Santa Maria Basin - 9N/32W-22D1



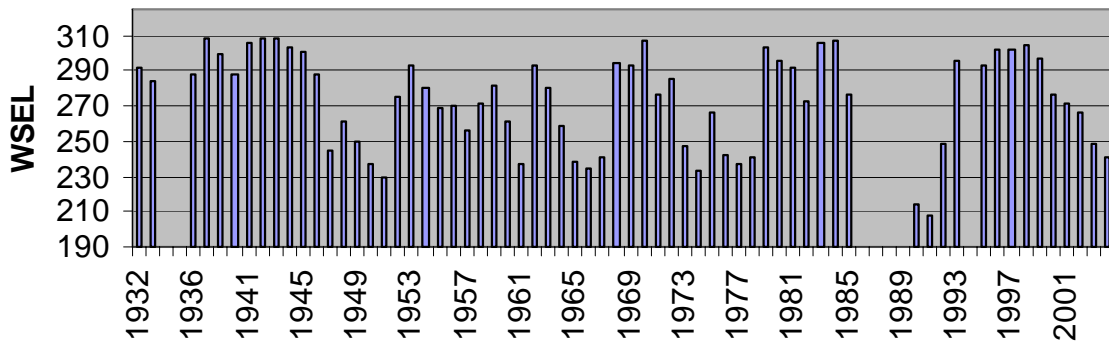
3.5 mi. SE of Sisquoc and .2 mi. E of Foxen Cyn. Rd. Drilled irrigation well. Diam. 14", depth 203' (1992). LSD is 495' MSL

East Santa Maria Basin 9N/33W-12R2



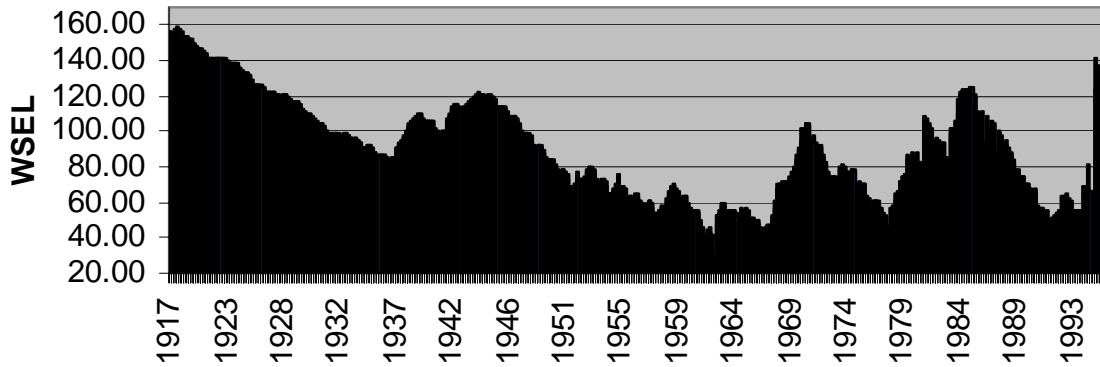
In Sisquoc, across from Blockman Union School. Drilled irrigation well. Diam. is 16", depth is 640'. LSD is 427'. Perf's 190-630'. Appended to record 9N/32W-7N1

Santa Maria Basin - 10N/33W-27G1



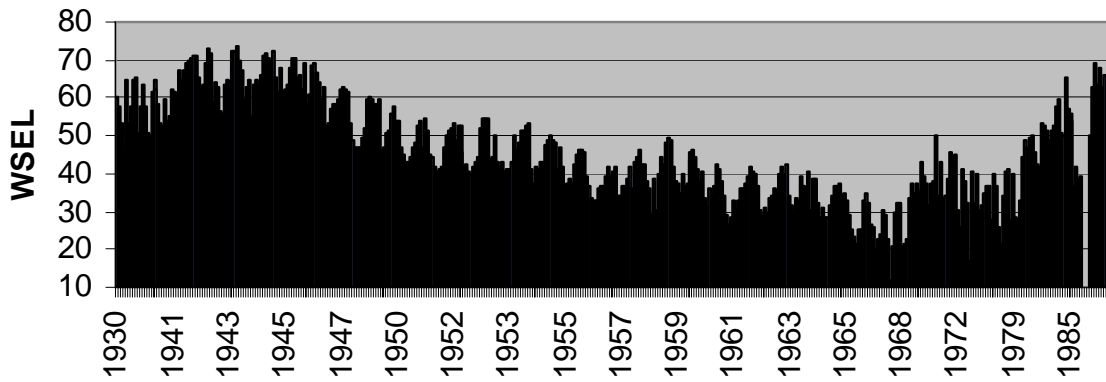
6000' NW of Fugler Pt. and .5 mi. N of Betteravia Rd. Drilled domestic water table well. Diam. 16", depth 272'. Perf'd 140-180' and 240-260'. LSD is 338' MSL

Santa Maria Basin - 10N/34W-14E5



In Santa Maria City @ Simas Park. Drilled public supply well. Diam 16", depth 322'. Lsd is 221'. Perf's 150-188' and 312-322'

Santa Maria Basin - 11W/35W-33G1



Near Guadalupe .15 mi. E of Jct. hwy 1 and Division St. Drilled irrigation well. Diam. unknown. Depth 141'. LSD is 90' MSL

Appendix B - Depth to Groundwater for selected wells 2001-2005

Well Number	Altitude of Land Surface (ft.)	2005	2004	2003	2002	2001
4N/25W-19F4	105	4/27 - 73.30	4/29 - 84.50	3/28 - 78.90	4/3 - 79.95	3/20 - 72.34
4N/25W-28M1	53	4/28 - 29.33	4/29 - 38.13	3/31 - 18.03	4/3 - 15.03	3/21 - 12.42
4N/25W-30D1	7	4/27 - flowing	4/29 - 1.00	3/28 - 0.50	4/3 - flowing	3/20 - flowing
4N/25W-34G1	188	4/28 - 98.20	4/29 - 98.50	pumping	3/21 - 102.35	3/21 - 102.35
4N/26W-15D2	255	6/5 - 9.08	SPR - 36.75	5/23 - 9.58	NA	APR - 3.92
4N/26W-17N1	104	6/5 - 69.83	SPR - 76.00	5/27 - 72.16	6/13 - 71.92	APR - 69.42
4N/26W-23F6	65.24	NA	discontinued	5/27 - 70.16	6/13 - 54.25	APR - 50.83
4N/26W-8L1	250	NA	SPR - 0.00	5/23 - 0.00	6/13 - 3.92	APR - 12.33
4N/26W-8P3	220	6/5 - 38.58	SPR - 45.58	5/23 - 32.92	6/13 - 43.08	APR - 21.75
4N/27W-13R1	38.63	SPR - 25.12	SPR - 27.58	MAR - 25.70	6/13 - 25.25	APR - 25.15
4N/27W-14P1	18	APR - -6.99	APR - 6.29	obstructed	obstructed	obstructed
4N/27W-14R1	27.84	obstructed	obstructed	obstructed	obstructed	APR - 0.03
4N/27W-15E1	145	APR - 79.60	APR - 80.34	MAR - 90.18	MAR - 79.31	APR - 78.61
4N/27W-18Q1	110	APR - 10.48	APR - 12.56	MAR - 12.52	MAR - 12.35	APR - 12.37
4N/27W-21B1	68	APR - 31.75	APR - 34.70	MAR - 45.36	MAR - 36.26	APR - 30.84
4N/27W-22Q1	13	APR - 3.10	APR - 3.75	MAR - 3.77	MAR - 3.71	APR - 3.02
4N/27W-8E1	251	APR - 94.66	obstructed	MAR - 96.72	MAR - 98.72	APR - 100.42
4N/28W-12P5	105	Discontinued	discontinued	discontinued	discontinued	NA
4N/28W-16R2	22	6/21 - 7.65	6/22 - 11.48	6/12 - 10.95	6/19 - 16.31	6/19 - 14.15
4N/28W-2N2	177.9	6/20 - 28.00	6/23 - 33.31	6/12 - 29.31	6/19 - 31.16	6/20 - 29.61
4N/28W-5R1	131	6/21 - 16.52	6/23 - 20.54	NA	6/18 - 21.69	6/20 - 21.68
4N/28W-9A3	84.1	6/21 - 21.34	6/23 - 34.83	6/13 - 36.07	6/18 - 36.95	6/20 - 38.84
4N/28W-9G3	60.18	6/21 - 38.21	6/23 - 43.49	6/12 - 46.35	6/18 - 46.69	6/20 - 55.31
6N/30W-7G5	600	3/23 - 47.87	3/17 - 50.32	3/26 - 48.59	3/28 - 51.38	3/27 - 51.38
6N/31W-7F1	385	3/21 - 62.33	3/11 - 65.28	3/17 - 65.87	3/25 - 64.66	3/26 - 66.29
6N/32W-2Q1	359	3/21 - 57.04	3/11 - 61.08	3/17 - 60.50	3/20 - 60.69	3/26 - 58.32
6N/32W-6K1	384	3/21 - 31.78	3/16 - 33.20	3/20 - 32.93	3/20 - 31.27	3/26 - 30.23
7N/30W-33M2	746	Discontinued	discontinued	3/25 - 179.24	4/2 - 177.42	3/28 - 189.59
7N/30W-35R1	880	3/31 - 207.54	3/19 - 193.94	3/27 - 185.98	4/1 - 174.14	3/29 - 171.35
7N/31W-23P1	822	3/23 - 26.79	3/11 - 28.48	3/19 - 24.37	3/25 - 16.60	3/27 - 12.69
7N/31W-36L2	721	3/23 - 35.59	3/17 - 34.16	3/25 - 30.26	3/25 - 27.29	3/28 - 25.09
7N/32W-31M1	450	3/21 - 46.44	3/16 - 44.99	3/20 - 43.56	3/20 - 40.56	3/26 - 41.51
7N/33W-21N1	360	3/21 - 297.64	3/16 - 298.43	3/18 - 300.55	3/20 - 300.99	3/22 - 300.46
7N/33W-36J1	495	3/21 - 130.22	3/16 - 126.35	3/20 - 128.34	3/20 - 127.03	3/26 - 127.28
7N/33W-36J2	478	3/21 - 58.99	3/16 - 57.61	3/20 - 55.35	3/20 - 57.22	3/26 - 55.00
7N/34W-12E1	385.8	3/17 - 322.74	3/16 - 322.67	3/17 - 322.04	3/19 - 322.03	3/20 - 322.04
7N/34W-24N1	130.4	3/17 - 73.06	3/16 - 72.89	3/17 - 71.85	3/19 - 71.86	3/22 - 71.93
7N/34W-35K9	101	3/9 - 19.89	3/9 - 22.21	3/17 - 20.95	3/19 - 21.58	3/22 - 20.30
7N/35W-22J1	31.8	3/7 - 11.93	3/9 - 18.39	3/11 - 19.93	3/16 - 21.72	3/19 - 13.51
7N/35W-27P1	260	3/16 - 219.23	3/23 - 220.45	3/11 - 220.67	3/18 - 221.04	3/22 - 220.86
8N/33W-20Q2	408	4/1 - 54.29	3/31 - 46.05	4/2 - 40.66	3/19 - 36.43	3/23 - 55.07

Well Number	Altitude of Land Surface (ft.)	2005	2004	2003	2002	2001
9N/32W-22D1	495	3/18 – 31.95	3/18 – 33.75	3/5 - 32.27	3/27 - 31.94	3/28 - 26.80
9N/33W-12R2	427	3/22 – 123.46	3/2 – 115.39	3/5 - 111.19	3/27 - 97.07	3/28 - 92.88
9N/33W-2A7	377	3/18 -79.11	3/2 – 106.49	3/4 - 96.67	4/9 - 84.33	3/28 - 67.44
10N/26W-4R1	2116	3/2 – 158.77	2/24 – 143.09	2/24 - 137.15	3/26 - 134.36	3/29 - 132.19
10N/33W-27G1	338	3/10 – 99.38	3/2 – 96.95	3/4 - 89.23	3/27 - 70.95	3/27 - 66.11
10N/34W-14E5	220	obstructed	3/4 – 115.70	3/11 - 104.84	3/21 - 95.50	3/27 - 87.45
10N/34W-4R1	192.1	destroyed	destroyed	destroyed	3/21 - 73.76	3/26 - 68.36
10N/35W-11E4	118	3/1 – 44.37	3/4 – 41.32	3/3 - 37.48	3/17 - 37.63	3/26 - 31.57
10N/36W-12P1	28	3/22 - -2.70	3/7 - -2.95	3/6 - -3.11	3/17 - -2.20	3/25 - -2.33
11N/35W-33G1	90	3/4 - 29.31	3/7 – 28.38	3/3 - 24.24	3/17 - 26.89	3/25 - 21.83

* SPR = Spring Measurement, MAR = March Measurement and APR = April Measurement

Appendix C - Santa Barbara County Water Production

By Purveyor and Calendar Year

Year	City of Buell-ton	Cal Cities Water (Orcutt)	Carp. Water District	Cuy-ama CSD	Goleta Water District	City of Guad-alupe	La Cumbre Mutual Water	City of Lompoc	Los Alamos CSD	Mission Hills CSD	Mont-ecito Water District	City of Santa Barbara	City of Santa Maria	Santa Ynez River WCD	City of Sol-vang	Vand-enberg AFB	Vand-enberg Village CSD	Totals
1976	535	4330	5368	300	15844	845	1672	3416	158	500	3995	14463	8080	5409	1264	3795	1543	71517
1977	528	4849	5025	321	14867	781	1565	3327	158	500	3713	12718	7509	6643	1198	3796	1464	68962
1978	641	4621	4305	300	13785	722	1339	3282	161	500	3463	12404	7445	5063	1098	3353	1309	63791
1979	716	5099	4934	295	15405	666	1326	3596	205	500	3858	13719	8069	6006	1122	3278	1525	70319
1980	752	5608	5129	292	16034	762	1533	3753	230	583	4099	14543	8739	6527	1231	4026	1527	75368
1981	770	6109	5338	333	15610	738	1508	3607	211	492	4295	14095	8691	6517	1622	4330	1589	75855
1982	725	5508	4449	262	13331	675	1387	3596	211	417	3612	13475	8311	5343	1569	4169	1291	68331
1983	743	5714	3898	235	11896	733	1284	3618	179	416	3576	14439	8904	4447	1362	3375	1181	66000
1984	971	7079	6130	254	15796	961	2067	4447	240	570	5483	16826	10537	7885	1876	4211	1482	86815
1985	939	7276	5488	258	15344	908	1900	4525	230	522	4905	16335	10635	7159	2028	4063	1486	84001
1986	1057	7625	5068	275	14874	800	1827	5029	269	542	4789	16277	11039	6174	2028	3768	1485	82926
1987	1153	7916	5845	274	15290	757	2008	4884	262	569	4889	16140	11192	6327	1999	3717	1441	84663
1988	1204	8678	5986	218	15358	823	2209	5354	253	700	5314	16517	11848	6529	2153	3850	1577	88571
1989	1221	8860	6280	195	11451	828	1617	5612	256	694	5234	15067	12470	6742	2080	3793	1582	83982
1990	1083	8691	5362	189	10013	724	1298	4930	251	633	5034	9849	12057	6337	1963	3401	1438	73253
1991	955	8210	4055	182	9393	685	1166	4413	238	578	3779	9559	11478	5814	1852	3065	1342	66764
1992	964	8381	4315	173	11066	718	1320	4653	225	600	4025	10507	12074	5402	1868	4124	1401	71816
1993	958	8174	4312	168	11837	653	1321	4670	240	618	4420	11371	11835	7599	1871	4394	1380	75821
1994	918	8572	4489	169	10634	668	1555	4770	236	628	4368	12079	12133	5332	1807	4186	1287	73831
1995	896	8447	4314	181	13317	662	1542	4772	260	604	4155	12716	12265	5202	1611	3916	1293	76153
1996	923	9906	4298	191	12184	585	1648	5086	276	658	4702	13216	12323	6500	1641	4463	1356	79956
1997	991	9376	4635	213	14667	622	1632	5804	256	733	5369	14546	12796	6343	1686	4486	1523	85678
1998	806	8154	3985	165	11758	574	1337	5231	238	540	4200	12970	10665	4290	1425	3958	1291	71587
1999	897	9259	4442	189	12741	749	1849	5408	320	762	5538	13784	11851	6163	1533	4538	1467	81491
2000	975	8262	4379	190	13317	618	1546	4566	263	609	5112	13395	11231	5303	1532	4980	1233	77511
2001	991	8053	3901	183	12225	658	1399	4465	251	591	4473	12531	11155	5355	1559	4476	1201	73467
2002	1135	9464	4436	212	14851	782	2138	5625	344	632	5978	14353	13339	6479	1517	4521	1598	87404
2003	1146	9071	4215	178	12923		1880	5567	328		5716	13649	13495	5734	1455	4471	1504	
Avg	914	7546	4799	228	13422	730	1603	4572	241	581	4575	13627	10792	6022	1641	4018	1421	76512
Max	1221	9906	6280	333	16034	961	2209	5804	344	762	5978	16826	13495	7885	2153	4980	1598	88571
Min	528	4330	3898	165	9393	574	1166	3282	158	416	3463	9559	7445	4290	1098	3065	1181	63791

Appendix D - Santa Barbara County Groundwater Basins Summary

Basin	Size	Estimated basin SAFE YIELD		Estimated Net Demand on groundwater (AFY)	Surplus/ (Overdraft) (AFY)	Available Water in Storage (AF)	Land Use Summary
		For gross Pumpage (Perennial Yield) (AFY)	For Net Pumpage (Net Yield) (AFY)				
Carpinteria	6,700 acres	4,294	3,865	2,605 (Pumpage level assumes that all available surface supplies are utilized.)	1,260	50,000	One city, orchards, irrigated crops and greenhouses
Montecito	4,300 acres	1,350	1,215	Pumpage not required due to surplus surface supplies.	2500 (Based on overall Montecito Area supply)	14,400	Primarily low-density residential use; unincorporated
Santa Barbara	4,500 acres	847	805	Pumpage not required due to surplus surface supplies. Basin managed by City of S.B.	2838 (Based on overall City supply.)	10,000	Primarily residential, industrial and commercial
Foothill	3000 acres	953	905	898 (Maximum long-term pumpage. Basin managed by City of S.B.)	Not subject to overdraft per SB/LCMWC agreement.	5,000	Primarily residential
Goleta North/Central	5700 acres	3,600	3,420	3,420	Not subject to Overdraft per Court decision.	29,000	Primarily residential, industrial and commercial. Basin has been adjudicated and is not subject to overdraft.
Goleta West	3500 acres	500	475	220	255	7,000	Primarily residential, industrial and commercial.
Buellton Uplands	16,400 acres	3,740	2,768	1,932	800	154,000	Extensive agriculture; one city
Santa Ynez Uplands	83,200 acres	11,500	8,970	10,998	(2,028)	900,000	Three towns, one city, and other low density residential; varied, high-value agriculture
Lompoc	48,600 acres	28,537	21,468	22,459	(991)	170,000	One city, unincorporated urban development, Vandenberg AFB; varied agriculture; petroleum
San Antonio	70,400 acres	20,000	15,000	24,540	(9,540)	800,000	One town; extensive agriculture; some petroleum; VAFB
Santa Maria	110,000 acres (80,000 within Santa Barbara County)	120,000	80,000	100,000 (87,500 with City of Santa Maria reduction in pumpage due to SWP supply.)	(2,368)	1,100,000	Two cities; extensive unincorporated urban area (Santa Barbara County); extensive irrigated agriculture; petroleum
Cuyama	441,600 acres (81,280 within						Extensive agriculture; some petroleum; very low

Basin	Size	Estimated basin SAFE YIELD		Estimated Net Demand on groundwater (AFY)	Surplus/ (Overdraft) (AFY)	Available Water in Storage (AF)	Land Use Summary
		For gross Pumpage (Perennial Yield) (AFY)	For Net Pumpage (Net Yield) (AFY)				
	Santa Barbara County)	10,667	8,000	36,525	(28,525)	1,500,000	population density
SPECIAL BASINS/LIMITED DATA							
More Ranch	502 acres	84	76	24	60	N/A	Primarily open space, limited residential/agricultural
Ellwood to Gaviota Coastal Basins	67,200 acres		N/A	N/A	N/A	N/A	Agriculture, primarily orchards and grazing; limited municipal/industrial
Gaviota to Pt. Conception Coastal Basins	23,040 acres		N/A	N/A	N/A	N/A	Agriculture, primarily grazing
Santa Ynez River Riparian Basins	12,000 acres (3 sub-units)		N/A	N/A	N/A	Storage generally maintained by capture of local runoff and by releases of prior rights water banked in Cachuma Lake	Two cities; 7,300 acres of irrigated cropland

AFY: Acre-Feet per Year
AF: Acre-Feet

Appendix E – Local Water District Observation Wells

Carpinteria Valley Water District

4N/25W-19F4	4N/25W-19H1	4N/25W-19J5	4N/25W-19K5
4N/25W-19M3	4N/25W-20K3	4N/25W-20K4	4N/25W-20L4
4N/25W-21L1	4N/25W-21N1	4N/25W-21N4	4N/25W-21R1
4N/25W-22R3	4N/25W-22R4	4N/25W-23P1	4N/25W-25L3
4N/25W-25N5	4N/25W-26A1	4N/25W-26C1	4N/25W-26C6
4N/25W-27F1	4N/25W-27F2	4N/25W-27R2	4N/25W-27Q6
4N/25W-28D2	4N/25W-28F7	4N/25W-28G3	4N/25W-28J1
4N/25W-28M1	4N/25W-29D1	4N/25W-29D7	4N/25W-29H2
4N/25W-29K2	4N/25W-29L1	4N/25W-29R1	4N/25W-30D1
4N/25W-34A1	4N/25W-34G1	4N/25W-35A3	4N/25W-35B6
4N/25W-35E1	4N/26W-23A2		

City of Santa Barbara

Storage Unit 1

4N/27W-8R2	4N/27W-9M1	4N/27W-9Q1	4N/27W-13R1
4N/27W-14K2	4N/27W-14P1	4N/27W-14R1	4N/27W-15E1
4N/27W-15E2	4N/27W-15J2	4N/27W-15K1	4N/27W-15Q10
4N/27W-16C1	4N/27W-16C2	4N/27W-16E2	4N/27W-16R1
4N/27W-17J1	4N/27W-21B1	4N/27W22A2	4N/27W-22A3
4N/27W-22A4	4N/27W-22B6	4N/27W-22B7	4N/27W-22B8
4N/27W-22B9	4N/27W-22B10	4N/27W-22B11	4N/27W-22C1
4N/27W-22E1	4N/27W-22E2	4N/27W-22G2	4N/27W-22G3
4N/27W-22G4	4N/27W-23E5	4N/27W-23E6	4N/27W-23F2
4N/27W-23F3	4N/27W-23F4	4N/27W-23F8	4N/27W-23F9
4N/27W-23H1	4N/27W-23H4		

Storage Unit 3

4N/27W-17L2	4N/27W-17L3	4N/27W-17L4	4N/27W-18Q1
4N/27W-18Q4	4N/27W-19A1	4N/27W-19A2	4N/27W-19A3
4N/27W-21E1	4N/27W-21E2	4N/27W-21E3	4N/27W-21F1
4N/27W-21F2	4N/27W-21G1	4N/27W-21G2	4N/27W-22M1
4N/27W-22M2	4N/27W-22Q1		

Foothill Storage Unit

4N/27W-5P1	4N/27W-7D1	4N/27W-7R3	4N/27W-8E1
4N/27W-8L3	4N/27W-8M5	4N/27W-8M6	4N/27W18B5
4N/28W-12C2	4N/28W-12H4	4N/28W-12R3	

Hope Ranch Storage Unit

4N/27W-18C2	4N/27W-18C3		
-------------	-------------	--	--

United States Bureau of Reclamation

6N/34W-02A06	6N/34W-01G02	6N/33W-07E03	6N/33W-06D04
6N/33W-06K02	6N/33W-08E02	6N/33W-08J02	6N/33W-16B01
6N/33W-11M01	6N/33W-12L01	6N/32W-18C02	6N/32W-08N04
6N/32W-17J02	6N/32W-16G04	6N/32W-09G01	6N/32W-13G02
6N/32W-11D01	6N/31W-17D01	6N/31W-17R01	6N/31W-22F01
6N/31W-24K02	6N/30W-29E01	6N/30W-21E01	6N/30W-20H02
6N/30W-22C02	6N/30W-24E05	7N/34W-22M06	7N/34W-26B04
7N/34W-27F09	7N/34W-26Q05	7N/34W-25F03	6N/34W-04G04
7N/34W-34R01	7N/34W-35K09		