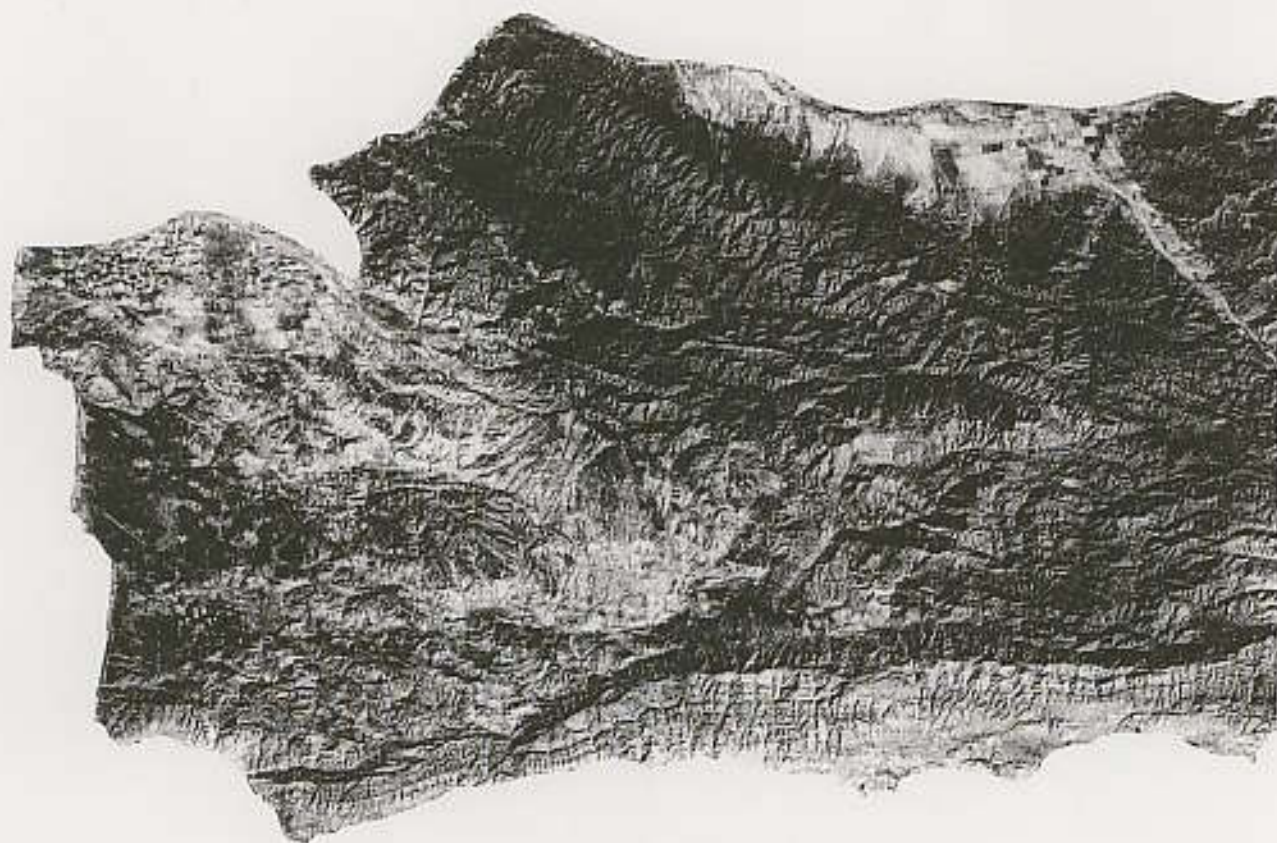


SANTA BARBARA COUNTY

1987 AGRICULTURAL PRODUCTION REPORT



Ronald M. Gilman
Agricultural Commissioner

PLEASE DO NOT REMOVE FROM OFFICE
AGRICULTURAL COMMISSIONER
263 CAMINO DEL REMEDIO
SANTA BARBARA, CA 93110

OFFICE COPY

The cover . . .

. . . Santa Barbara County as photographed by Landsat V. This satellite was launched into a sun-synchronous, polar orbit from Vandenberg Air Force Base in March of 1984. Orbiting at an altitude of 423 miles, the satellite will pass over a region of the earth at about the same local time every 16 days. From the five Landsat satellites, more than 1.5 million images of the earth are available to scientists for earth-resource surveys and monitoring programs.



Special thanks to Larry Carver and his staff at the Map and Imagery Laboratory of the University of California, Santa Barbara Library, for their assistance in reproducing the Landsat photograph featured on this year's cover.

The Honorable Board of Supervisors of Santa Barbara County

David Yager, Chairman, 1st District
Tom Rogers, 2nd District
William Wallace, 3rd District
DeWayne Holmdahl, 4th District
Toru Miyoshi, 5th District

and

Jack Parnell, Director
California Department of Food and Agriculture

Gentlemen:

Agriculture continues to be the major producing industry in Santa Barbara County with a gross production value for 1987 of \$381,663,487.

This 1987 agriculture value exceeds last year's value by 33 million dollars but with the continuing escalation of production costs net earnings were down for many producers. The values in this report are gross values and in no way reflect net income. The costs of production, which in some cases exceeded gross returns, must be subtracted to determine the net income. Santa Barbara County's diverse agriculture continues to provide stability to the local economy against the adversities routinely faced by agriculture such as pests, adverse weather and fluctuating markets. This diversity is reflected in the 33 different commodities which exceed a million dollars in value.

I wish to express my appreciation for the cooperation of all the growers, organizations and individuals who provided the information necessary for this report and a special thanks to the members of my staff who worked at compiling it.

Sincerely,



RONALD M. GILMAN
Agricultural Commissioner

TABLE OF CONTENTS

VEGETABLE CROPS	Page 1
FIELD CROPS	Page 2
FRUIT AND NUT CROPS	Page 3
SEED CROPS	Page 4
NURSERY PRODUCTS	Page 4-5
LIVESTOCK AND POULTRY	Page 6
LIVESTOCK, POULTRY AND APIARY PRODUCTS	Page 6
MISCELLANEOUS CROPS	Page 7
MILLION DOLLAR CROPS	Page 8
SUMMARY	Page 9
COMPARATIVE AGRICULTURAL VALUES	Page 10-11
DEPARTMENT STAFF	Page 12



VEGETABLE CROPS

	Year	Harvested Acreage	Production		Unit	Unit Wt.	Value	
			Per Acre	Total			Per Unit	Total
Artichokes	1987	1,009	486.58	490,959	CTN.	25#	\$ 7.53	\$ 3,696,921
	1986	696	400.96	279,068	CTN.	25#	\$ 9.13	\$ 2,547,891
Broccoli Fresh	1987	10,256	608.41	6,237,084	CTN.	25#	4.66	29,064,811
	1986	7,788	602.26	4,690,401	CTN.	25#	4.88	22,889,157
Frozen	1987	7,129	4.31	30,726	TON	TON	359.78	11,054,600
	1986	7,906	4.78	37,791	TON	TON	360.36	13,618,365
Cabbage	1987	1,592	708.90	1,128,569	CTN.	50#	3.91	4,412,705
	1986	1,580	740.30	1,169,674	CTN.	50#	4.08	4,772,270
Cauliflower Fresh	1987	7,149	561.01	4,010,661	CTN.	25#	5.51	22,098,742
	1986	5,792	550.90	3,190,183	CTN.	25#	5.46	17,421,839
Frozen	1987	317	6.01	1,905	TON	TON	472.93	900,932
	1986	573	4.98	2,854	TON	TON	491.78	1,403,540
Celery	1987	2,792	1,103.31	3,080,442	CTN.	60#	4.91	15,124,970
	1986	2,599	1,063.08	2,762,945	CTN.	60#	5.77	15,942,193
Lettuce, Head	1987	7,573	709.73	5,374,785	CTN.	50#	5.82	31,281,249
	1986	7,732	758.84	5,867,351	CTN.	50#	4.71	27,635,223
Lettuce, Leaf	1987	965	623.34	601,523	CTN.	30#	6.24	3,753,504
	1986	1,022	532.51	544,225	CTN.	30#	4.11	2,236,765
Peas, Edible Pod	1987	371	409.55	151,943	CTN.	10#	12.00	1,823,316
	1986	618	552.33	341,340	CTN.	10#	9.07	3,095,954
Spinach	1987	633	759.46	480,738	CTN.	20#	4.60	2,211,395
	1986	851	824.21	701,403	CTN.	20#	3.45	2,419,840
Squash, Summer	1987	642	640.92	411,471	CTN.	26#	5.05	2,077,929
	1986	350	929.86	325,451	CTN.	26#	6.24	2,030,814
Miscellaneous	1987	5,699						13,044,024
	1986+	5,316						15,582,345
Total	1987	46,127						\$140,545,098
	1986	42,823						\$131,596,196

+Tomato figure included in Miscellaneous



FRUIT AND NUT CROPS

	Year	Planted	Bearing	Production			Value	
				Per Acre	Total	Unit	Per Unit	Per Total
Avocados	1987	10,422	9,131	6.00	54,786	TON	\$ 398.00	\$ 21,804,828
	1986+	9,198	8,494	1.81	15,374	TON	\$ 1,192.68	\$ 18,336,262
Lemons	1987	1,652	1,631	13.50	22,019	TON	255.43	5,624,313
	1986	1,922	1,904	9.82	18,697	TON	225.28	4,212,060
Strawberries Fresh	1987	2,611	2,611	3,923.00	10,242,953	12# TRAYS	5.61	57,462,966
	1986	1,687	1,687	4,460.00	7,524,020	12# TRAYS	5.81	43,714,556
Processing	1987				5,887	TON	560.35	3,298,780
	1986				5,534	TON	527.82	2,920,956
Walnuts	1987	971	759	.90	683	TON	812.00	554,596
	1986	971	759	.76	577	TON	1,177.78	679,579
Grapes	1987	9,000	8,646	3.08	26,630	TON	526.54	14,021,760
	1986	9,510	8,986	2.91	26,149	TON	424.43	11,098,420
Miscellaneous	1987	205	160					1,070,123
	1986	249	183					952,695
Total	1987	24,861	22,938					\$103,837,366
	1986	23,537	22,013					\$ 81,914,528

+Revised



SEED CROPS

Year	Harvested Acreage	Production		Unit	Value		
		Per Acre	Total		Per Unit	Total	
Bean Seed	1987	3,405	17.39	59,213	CWT.	\$ 43.80	\$ 2,593,529
	1986	3,550	16.65	59,108	CWT.	\$ 42.31	\$ 2,500,859
Flower Seed	1987	1,053					5,620,800
	1986	1,125					7,725,998
Vegetable Seed	1987	668					1,300,771
	1986	637					1,865,609
Miscellaneous	1987	684					50,156
	1986	455					53,420
Total	1987	5,810					\$ 9,565,256
	1986	5,767					\$ 12,145,886



NURSERY PRODUCTS

Year	Production Area		Value
	House Sq. Ft.	Field Acres	Total
Cut Flowers & Cut Greens			
Chrysanthemums	1987	14,277,917	\$ 13,605,972
	1986	17,278,617	\$ 16,411,669
Orchids	1987	1,868,296	5,094,778
	1986	1,880,845	5,299,373
Carnations	1987	751,090	940,560
	1986	672,292	1,002,030
Gypsophila	1987		363.00
	1986		333.80
Miscellaneous Flowers	1987	1,818,540	275.46
	1986	1,225,050	219.20
Miscellaneous Greens, Trees and Wood Products	1987	660,000	224.01
	1986		257.50

NURSERY PRODUCTS Continued

	Year	Production Area		Total
		House Sq. Ft.	Field Acres	
Potted Plants				
Foliage Plants	1987	908,900	.01	\$ 4,684,779
	1986	1,039,468		\$ 4,853,802
Flowering Plants+	1987	3,628,482	.06	7,883,756
	1986	4,339,858		7,862,409
Orchid Plants	1987	1,074,448		5,559,990
	1986	587,169		3,685,637
Woody Ornamental & Ground Covers	1987	87,000	143.70	6,383,070
	1986		178.11	7,947,420
Herbaceous Perennials & Ground Covers, Turf, Bulbs & Bedding Plants	1987	1,795	38.72	5,333,326
	1986	123,340	24.94	3,754,936
Fruit Trees & Vines	1987	4,356	103.99	188,505
	1986	17,780	11.00	95,583
Vegetable Transplants	1987	401,795	74.01	883,509
	1986		60.00	468,000
<hr/>				
Total	1987	25,482,619	1,223.50	\$ 62,796,903
	1986	27,164,419	1,084.55	\$ 61,093,996

+ Includes: Chrysanthemums, Poinsettias, Geraniums, Begonias, Exacum, Fushias & Others.



LIVESTOCK AND POULTRY

	Year	Production			Value	
		No. of Head	Total Liveweight	Unit	Per Unit	Total
Cattle and Calves	1987	65,883	494,123	CWT.	\$ 60.25	\$ 29,770,911
	1986	60,614	487,493	CWT.	\$ 49.87	\$ 24,311,276
Sheep and Lambs	1987	5,453	6,282	CWT.	74.21	466,187
	1986	5,665	6,563	CWT.	63.77	418,523
Hogs and Pigs	1987	879	1,983	CWT.	55.43	109,918
	1986	920	1,938	CWT.	60.84	117,908
Miscellaneous	1987					8,285,238
	1986					8,234,842
Total	1987					\$ 38,632,254
	1986					\$ 33,082,549



LIVESTOCK, POULTRY AND APIARY PRODUCTS

	Year	Production	Unit	Value	
				Per Unit	Total
Milk and Milk Products	1987*	510,763	CWT.	\$ 11.53	\$ 5,889,097
	1986+	582,063	CWT.	\$ 11.95	\$ 6,955,653
Wool	1987	62,446	LBS.	.70	43,712
	1986	60,911	LBS.	.60	36,547
Apiary	1987				165,242
	1986				121,558
Miscellaneous	1987				4,580,040
	1986				5,300,515
Total	1987*				\$ 10,678,091
	1986+				12,414,273

* Preliminary
+ Revised

MISCELLANEOUS CROPS

VEGETABLES

Includes: anise, bell peppers, carrots, Chinese vegetables, cherry tomatoes, chili peppers, collards, cucumbers, gourmet specialty vegetables, green onions, kale, leeks, melons, paprika, parsley, potatoes, pumpkins, snap beans, sweet corn, table beets, tomatillos, and winter squash.

FIELD CROPS

Miscellaneous beans -

Includes: pinquitos, yellows, and small white.

Miscellaneous field crops -

Includes: straw, sudan hay, and bean straw.

FRUIT AND NUT CROPS

Includes: apples, apricots, cherimoya, guavas, kiwis, limes, macadamia nuts, mandarins, olives, oranges, peaches, persimmons, plums and table grapes.

SEED CROPS

Includes: alfalfa, peas and sudan.

LIVESTOCK AND POULTRY

Includes: breeding stock, chickens, goats, horses, and game birds.

LIVESTOCK, POULTRY AND APIARY PRODUCTS

Includes: eggs and fertilizer.

MILLION DOLLAR PRODUCTS

1987 RANKING

1986 RANKING

1	Strawberries	\$ 60,761,746	1
2	Broccoli	40,119,411	2
3	Lettuce	31,281,249	3
4	Cattle and Calves	29,770,911	4
5	Cauliflower	22,999,674	5
6	Avocados	21,804,828	6
7	Celery	15,124,970	8
8	Grapes	14,021,760	9
9	Chrysanthemums	13,605,972	7
10	Flowering Plants	7,883,756	11
11	Miscellaneous Flowers	7,729,122	14
12	Woody Ornamental and Ground Cover	6,383,070	10
13	Milk and Milk Products	5,889,097	13
14	Lemons	5,624,313	19
15	Flower Seed	5,620,800	12
16	Orchid Plants	5,559,990	15
17	Herbaceous Perennials & Ground Cover, Turf, Bulbs and Bedding Plants	5,333,326	20
18	Orchids	5,094,778	21
19	Pasture, Non-Irrigated	4,740,215	17
20	Foliage Plants	4,684,779	16
21	Cabbage	4,412,705	18
22	Beans, Dry	4,372,417	23
23	Lettuce, Leaf	3,753,504	29
24	Artichokes	3,696,921	26
25	Gypsophilia	3,376,058	24
26	Hay, Alfalfa	3,096,147	22
27	Bean Seed	2,593,529	27
28	Spinach	2,211,395	28
29	Squash, Summer	2,077,929	30
30	Peas, Edible Pods	1,823,316	25
31	Vegetable Seed	1,300,771	31
32	Hay, Grain	1,225,956	33
33	Miscellaneous Greens, Trees & Wood Products	1,133,478	-

SUMMARY

	<u>YEAR</u>	<u>ACREAGE</u>	<u>FOB VALUE</u>
Vegetables	1987	46,127	\$140,545,098
	1986	42,823	131,596,196
Field Crops	1987*	810,437	15,608,519
	1986+	823,377	15,921,961
Fruit and Nut Crops	1987	24,861	103,837,366
	1986+	23,537	81,914,528
Seed Crops	1987	5,810	9,565,256
	1986	5,767	12,145,886
Nursery Products	1987	1,809	62,796,903
	1986	1,708	61,093,996
Livestock and Poultry	1987		38,632,254
	1986		33,082,549
Livestock, Poultry and Apiary Products	1987*		10,678,091
	1986+		12,414,273
<hr/>			
Total	1987*	889,044	\$381,663,487
	1986+	897,212	\$348,169,389

* Preliminary

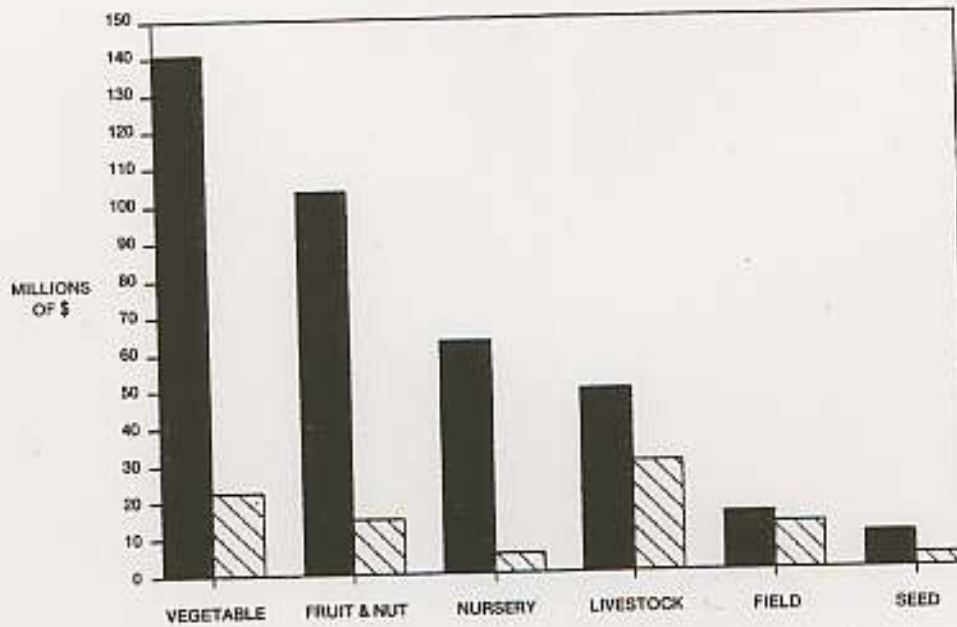
+ Revised

COMPARATIVE AGRICULTURAL VALUES

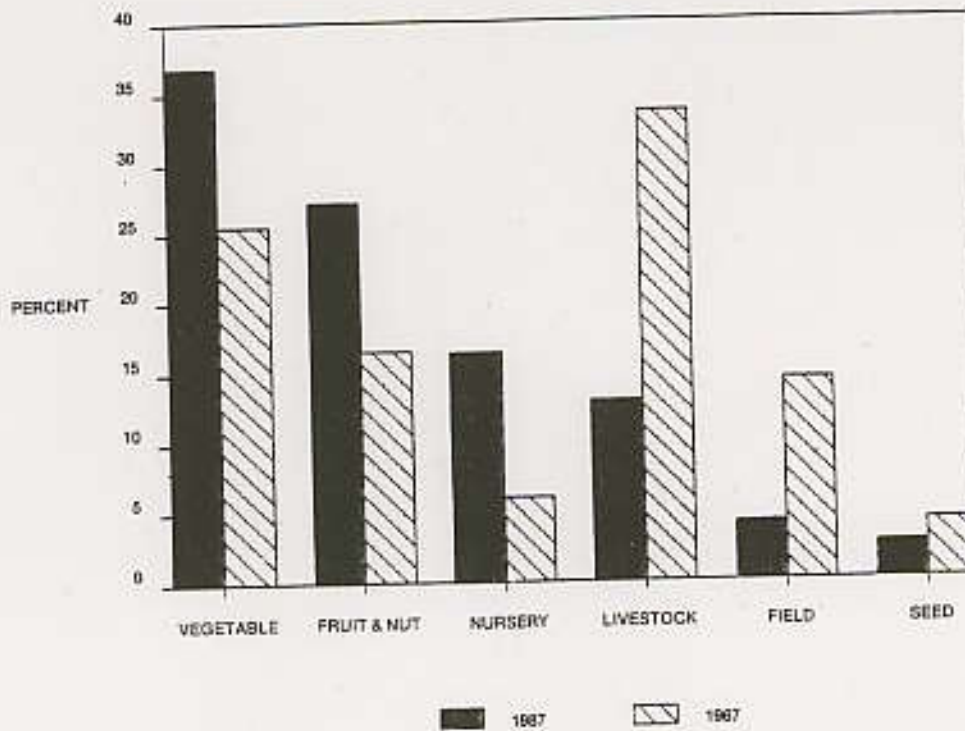
1987+	\$ 381,663,487
1986*	\$ 348,169,389
1985	339,835,993
1984	323,110,206
1983	318,903,463
1982	317,152,978
1981	308,773,222
1980	299,862,444
1979	248,525,596
1978	208,020,620
1977	190,907,996
1976	165,867,484

* Preliminary
+ Revised

Crop Values 1987 vs 1967
 Millions of Dollars
 (No adjustments for inflation)



Crop Values 1987 vs 1967
 Expressed as %



■ 1987 ▨ 1967

Agricultural Commissioner/Director of Weights and Measures

Ronald M. Gilman

Assistant Commissioner/Director

William Gillette

Deputy Director of Weights and Measures

James Wiley

Deputy Agricultural Commissioners

Joe Karl
Ross Pintaudi
Sally Piper

Entomologist

Jerry Davidson

Plant Pathologist

Steven Koike

Supervising Agricultural Biologists

Curt Sayer
Tom Wurster

Administrative Services Clerk

Kathy Freres

Administrative Staff

Judi Douglass
Joyce Murray
Ronaele Rayward
Julie Robles

Weights and Measures Inspectors

Dennis Gibson
Diane Green
Jerry Johnson
Rod Ross

Agricultural Biologists

Margaret Brown	Ken Masuda
Gary Burns	Tiana Melquist
Mike Champion	Sally Pierce
David Chang	Michael Pitchard
Kevin Cheesman	Mary Ann Rajala
Fred Crowder	Bill Robb
Glenn Janssen	Mike Roberts
Bill Jarvis	Guy Tingos
David Leung	Harriet Ward
Steve Loyal	